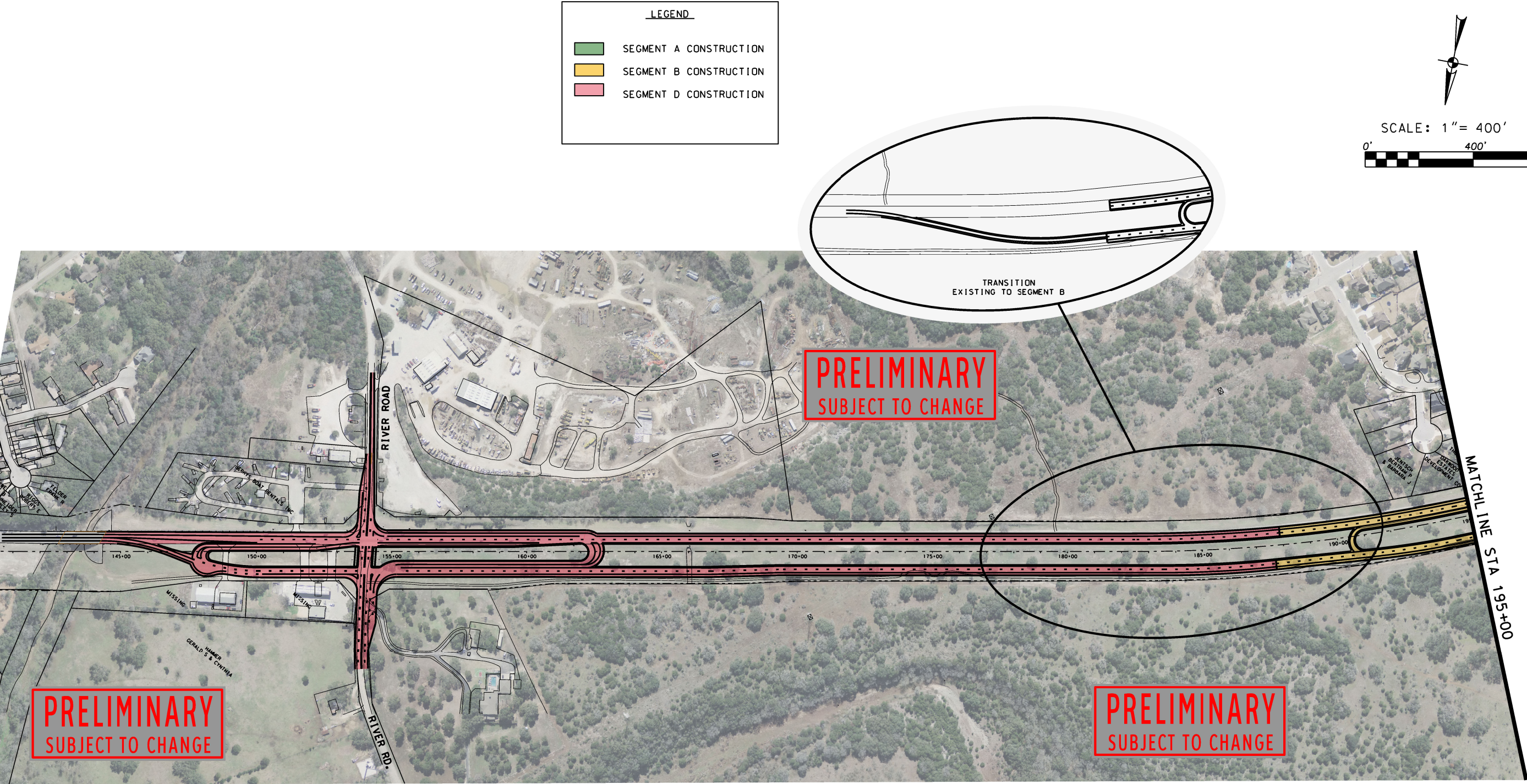


**Exhibit W**  
**to Development Agreement**  
**SH Loop 337 Improvement Segments**



Plotted on: 2/25/2013  
Design File name: D:\76\20\09\exhibits\EX130215SuperArterial\*ROW\*WI.dgn



INTERIM REVIEW ONLY  
Document incomplete. Not intended for  
permit, bidding or construction.  
Engineer: GILMER D. GASTON  
P.E. Serial No: 80472  
Date: 2/25/2013

**PAPE-DAWSON  
ENGINEERS**

555 EAST RAMSEY | SAN ANTONIO, TEXAS 78216 | PHONE: 210.375.9000  
FAX: 210.375.9010  
TEXAS BOARD OF PROFESSIONAL ENGINEERS, FIRM REGISTRATION # 470

**EXHIBIT W**

**SH LOOP 337**

**IMPROVEMENT SEGMENTS**

JOB NO. 7620-00

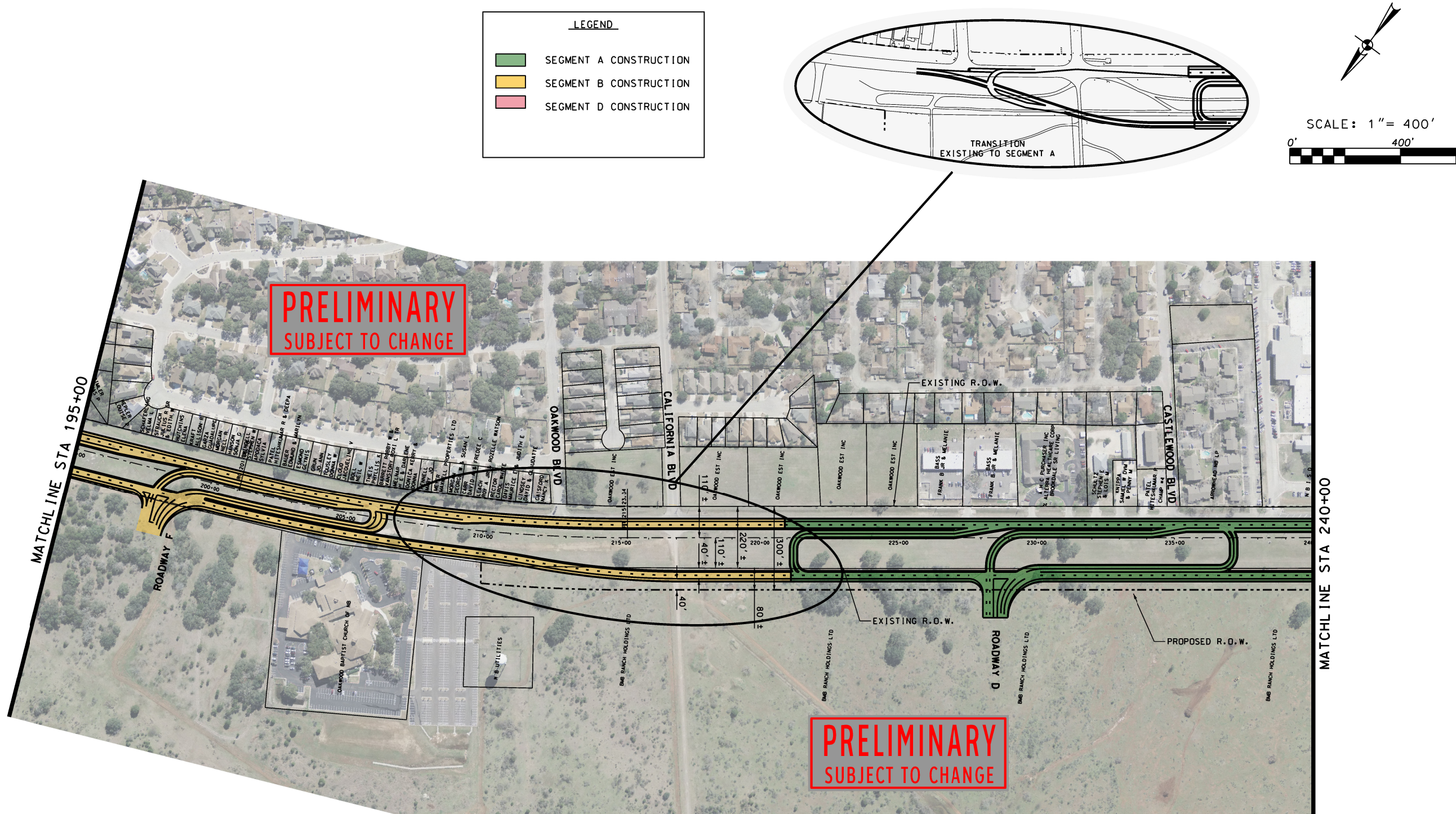
DATE FEB 2013

CHECKED GG DRAWN DM

SHEET 1 OF 3



Design File name: D:\76\20\09\exhibits\EX130215SuperArterial\*ROW\*W2.dgn  
Plotted on: 2/25/2013



**EXHIBIT W**

**SH LOOP 337**

**IMPROVEMENT SEGMENTS**

**PAPE-DAWSON  
ENGINEERS**

555 EAST RAMSEY | SAN ANTONIO, TEXAS 78216 | PHONE: 210.375.9000  
FAX: 210.375.9010

TEXAS BOARD OF PROFESSIONAL ENGINEERS, FIRM REGISTRATION # 470

JOB NO. 7620-00

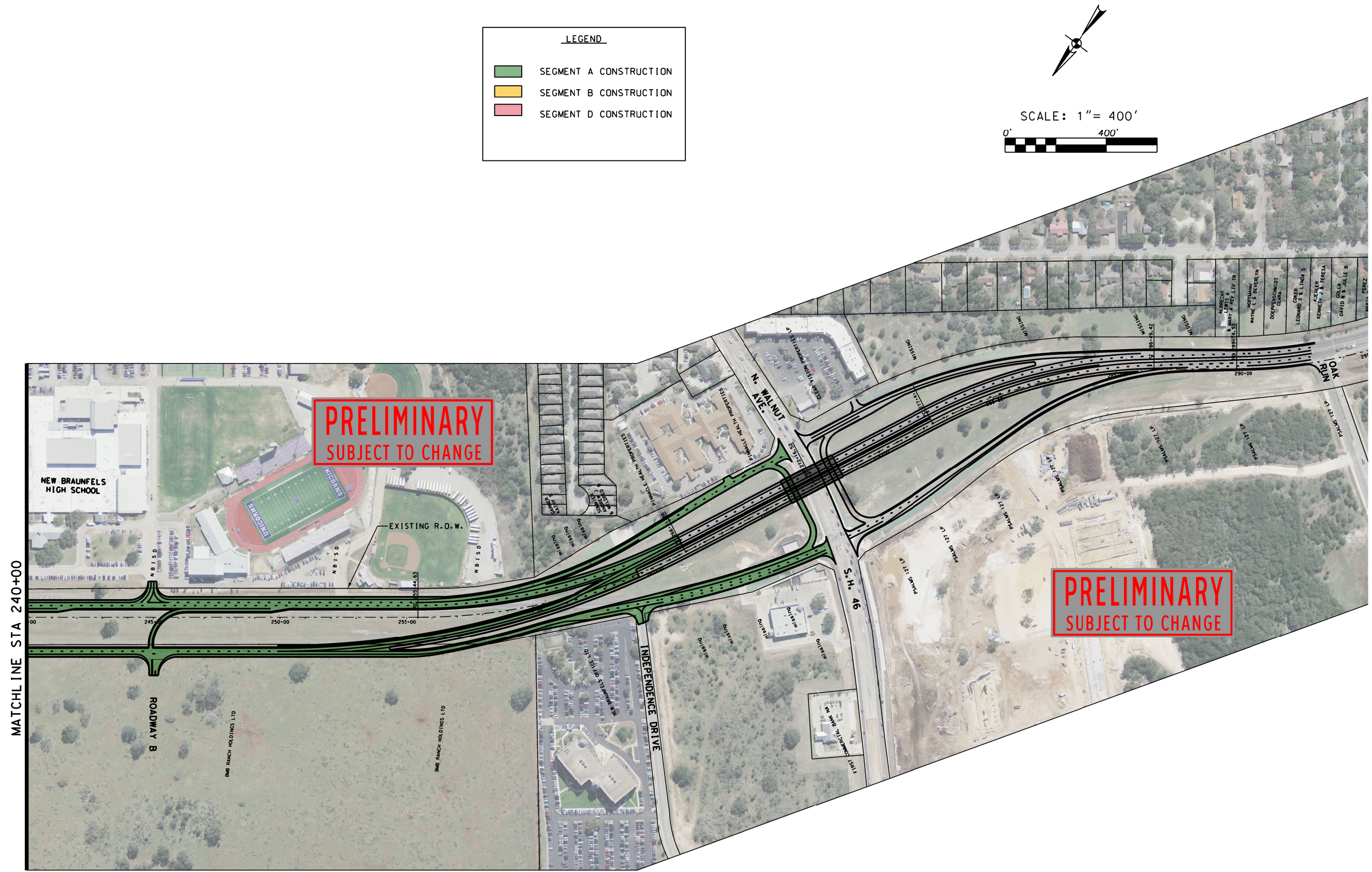
DATE FEB 2013

CHECKED GG DRAWN DM

SHEET 2 OF 3



Design File name: D:\76\20\09\exhibits\EX130215SuperArterial\*ROW\*W3.dgn  
Plotted on: 2/25/2013



**LEGEND**

SEGMENT A CONSTRUCTION

SEGMENT B CONSTRUCTION

SEGMENT D CONSTRUCTION

SCALE: 1" = 400'

0' 400'

INTERIM REVIEW ONLY  
Document incomplete. Not intended for  
permit, bidding or construction.  
Engineer: GILMER D. GASTON  
P.E. Serial No: 80472  
Date: 2/25/2013

EXHIBIT W

SH LOOP 337

IMPROVEMENT SEGMENTS

**PAPE-DAWSON ENGINEERS**

555 EAST RAMSEY | SAN ANTONIO, TEXAS 78216 | PHONE: 210.375.9000 FAX: 210.375.9010

TEXAS BOARD OF PROFESSIONAL ENGINEERS, FIRM REGISTRATION # 470

JOB NO. 7620-00

DATE FEB 2013

CHECKED GG DRAWN DM

SHEET 3 OF 3