

**Exhibit Y**

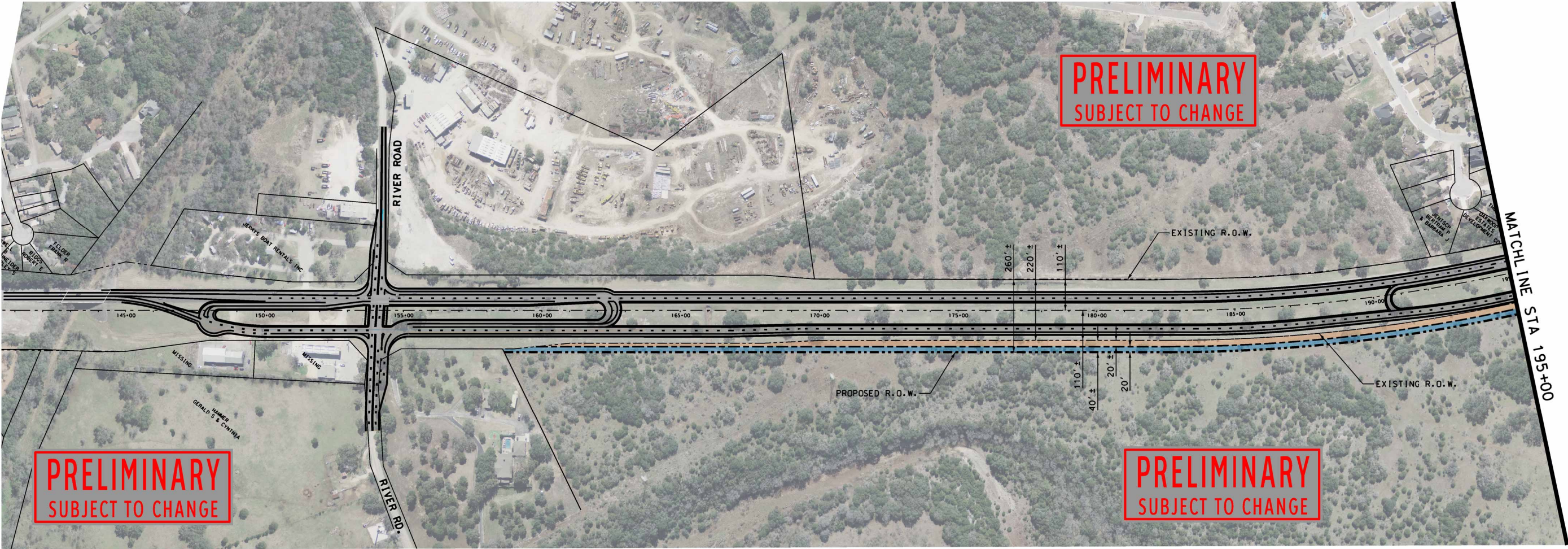
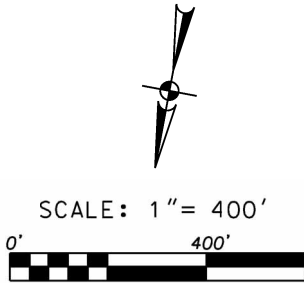
**to Development Agreement**

**Additional SH Loop 337 ROW & Valued SH Loop 337 ROW**



Plotted on: 2/18/2013  
Design File name: D:\76\20\09\exhibits\EX130215SuperArterial\*ROW\*Y1.dgn

- LEGEND
- ROADWAY
  - ADDITIONAL SH LOOP 337 R.O.W.  
ESTIMATED @ 6 AC.± FOR ENTIRE PROJECT
  - VALUED SH LOOP 337 R.O.W.  
ESTIMATED @ 6 AC.± FOR ENTIRE PROJECT
- \* ALL R.O.W. AREA CALCULATIONS ARE ESTIMATES  
AND NOT BASED ON FIELD SURVEY.



INTERIM REVIEW ONLY  
Document incomplete. Not intended for  
permit, bidding or construction.  
Engineer: GILMER D. GASTON  
P.E. Serial No: 80472  
Date: 2/18/2013

**PAPE-DAWSON  
ENGINEERS**

555 EAST RAMSEY | SAN ANTONIO, TEXAS 78216 | PHONE: 210.375.9000  
FAX: 210.375.9010  
TEXAS BOARD OF PROFESSIONAL ENGINEERS, FIRM REGISTRATION # 470

**EXHIBIT Y**

**ADDITIONAL SH LOOP 337 AND  
VALUED SH LOOP 337 ROW**

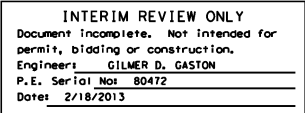
JOB NO. 7620-00

DATE FEB 2013

CHECKED **GG** DRAWN **DM**

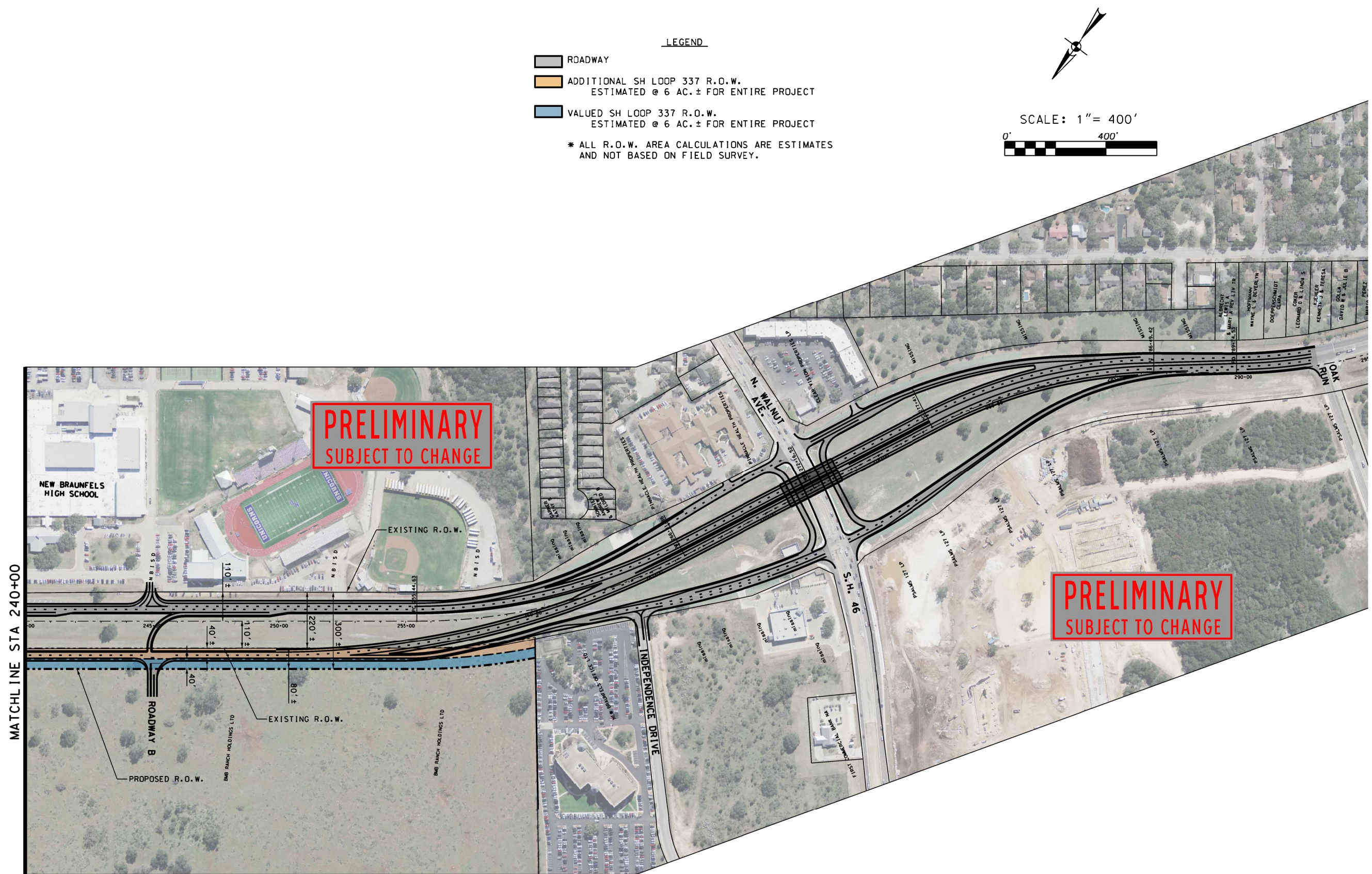
SHEET 1 OF 3







Design File name: D:\76\20\09\exhibits\EX130215SuperArterial\*ROW\*Y3.dgn  
Plotted on: 2/18/2013



INTERIM REVIEW ONLY  
Document incomplete. Not intended for  
permit, bidding or construction.  
Engineer: GILMER D. GASTON  
P.E. Serial No: 80472  
Date: 2/18/2013

**EXHIBIT Y**

**ADDITIONAL SH LOOP 337 AND  
VALUED SH LOOP 337 ROW**

**PAPE-DAWSON  
ENGINEERS**

555 EAST RAMSEY | SAN ANTONIO, TEXAS 78216 | PHONE: 210.375.9000  
FAX: 210.375.9010  
TEXAS BOARD OF PROFESSIONAL ENGINEERS, FIRM REGISTRATION # 470

JOB NO. 7620-00

DATE FEB 2013

CHECKED GG DRAWN DM

SHEET 3 OF 3