

TEMPORARY FOOD ESTABLISHMENT / CONCESSION REQUIREMENTS FOR INDIVIDUAL BOOTH COORDINATORS / VENDORS

The following requirements are based upon the Texas Food Establishment Rules. The event organizer and the individual concession operator are responsible for adhering to these requirements at all times.

Additional permitting may be required by the Development Planning Division.
<https://www.nbtexas.org/DocumentCenter/View/13767/Special-Event-Permit-Application>

Critical operational requirements:

Failure to comply with the following rules will result in immediate closure. Closure will be in effect until all items are corrected.

1. Keep potentially hazardous foods below 41° F or above 150° F. All foods shall be initially cooked/heated above their minimum cooking temperatures. A temperature above 175° F. for most hot foods should be sufficient.
2. Leftover food shall not be reused. During multiple day celebrations, each concession shall begin with new, fresh product.
3. Hand washing station required. A water container must be designed with a spigot that allows the user to wash hands freely without continuously depressing the spigot or tilting the container. Following handwashing, gloves shall be used when handling foods.
4. Provide utensil washing if food preparation involves utensils. Provide 3 basins if no permanent facilities are on site. First basin is for washing and has detergent wash water only. The center basin is for rinsing and has only clean water (replaced as needed). The last basin is for soaking utensils for 1 minute in a sanitizing solution of 50-100ppm chlorine (1½ teaspoons bleach per gallon of clean water). Dry utensils in the air, or with paper towels only. Remember proper sequence: WASH, RINSE, SANITIZE.
5. Utilize fuel or electricity for hot holding units. Insulated containers with no active source of heat are unacceptable. **Sterno is not permitted for outdoor events.** Electric roasters or crock-pots shall be employed. All electrical connections shall be through outdoor rated equipment and shall be circuit breaker protected.
6. Mechanical refrigeration will be required for multiple day events. Small amounts of food may be held within ice chest, which are constantly draining. Mechanical refrigeration shall be employed for bulk storage.

Operational requirements:

1. Monitor food temperatures with a metal stem-type thermometer. Thermometers should have a range of 0 - 220° F. Thermometers should be cleaned and sanitized between uses.
2. Use only cutting boards, utensils, equipment, food preparation and serving surfaces that are constructed of smooth and easily cleanable materials. Clean and sanitize these items frequently during the event.
3. Use a set of utensils and surfaces to prepare raw or partially cooked foods, which are separate from the utensils and surfaces used to prepare fully cooked foods.
4. Test sanitizing solutions with chlorine test papers. Sanitizing solution must be kept between 50-100ppm chlorine. Test papers can be found at restaurant supply houses.
5. Use spray bottles or sanitizing solution buckets with paper towels to frequently wipe counters and spot clean equipment.
6. Store ice for drinks or consumption in their original bag in an ice chest during service. Ice bags shall be punctured underneath to allow drainage and slit on the top to allow dispensing. Consumers shall not dispense their own ice for drinks. Ice shall be dispensed with scoops with handles. Nothing other than the scoop shall be stored in drink ice.
7. Protect all food, utensils and paper goods from exposure to dirt, dust, and insects. These items must be kept covered or wrapped to minimize exposure to potential contaminants. Keep cups wrapped in their original plastic sleeves until dispensed. **Keep all food and food packages off floor of food booth.**

8. Provide only condiments that are individually packaged or dispensed from an *approved* covered container. Foil, plastic wrap, etc. do not provide adequate protection for bowl type dispensers. Use pump-type condiment dispensers.

Structural requirements/operations:

1. Collect drainage from ice bins, ice chest, beverage dispensers, handwashing, utensil washing, and similar equipment in buckets or pans for disposal in an approved location.
2. Provide covered garbage containers with plastic liners.
3. Provide floor covering if your booth is not set up on asphalt or concrete. Flooring must be present in cooking, serving, food preparation, and utensil washing area. Approved floor coverings are concrete, asphalt, plywood, linoleum, or a surface approved in advance by the Health Authority.
4. Provide overhead covering above food preparation, cooking, serving, and utensil washing areas.
5. Service tables must be skirted to the ground, if supplies are stored beneath.
6. Restrict public access to sides and rear of food booth, and no food production or dispensing shall occur at front of food booth.
7. Each concession must have an approved fire extinguisher.
8. Electric fans may be used for fly control if necessary.
9. A minimum of 10' separation between heat producing sources and combustibles is required. All pits or other approved heat sources must be restricted from public access. No open-faced grills or pits are permitted.
10. **The cooking of foods using a flat grill, fryer, char grill, or other device inside a truck or trailer may require a vent a hood and/or fire suppression system. Please contact the New Braunfels Fire Marshall's Office at 830-221-4200 for questions on this matter.**

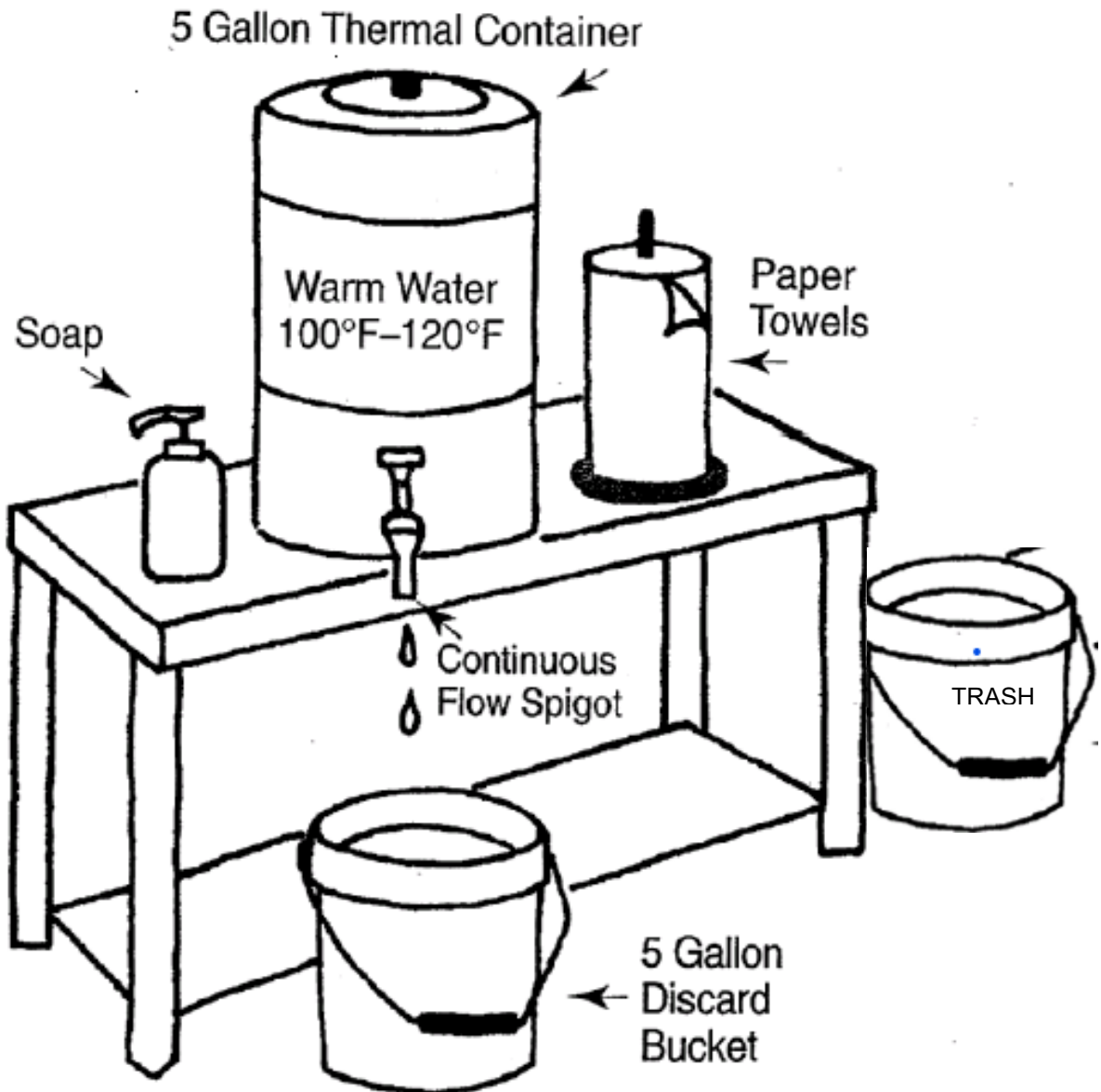
FOOD PREPARED OUTSIDE THE FOLLOWING PARAMETERS MAY BE DETAINED/OR DISCARDED.

1. **ONLY PREVIOUSLY APPROVED PRODUCT WILL BE ALLOWED.**
2. **UNAPPROVED FOODS AND/OR UNCONFIRMED FOOD SOURCE PRODUCT SHALL BE DESTROYED/EMBARGOED**
3. **"HOME" PREPARATION OF ANY PRODUCT IS PROHIBITED.**

SAMPLER REQUIREMENTS: No fee assessed if applicant can comply with the following regulations:

- ❖ Gloves shall be worn at all times and changed between different applications when handling any "ready-to-eat" food products offered to the public.
- ❖ Hand washing station is required.
- ❖ Only non-potentially hazardous foods, which are served by & under the control of vendor personnel, are allowed. Product shall not be left unattended if accessible to the general public.
- ❖ Sliced fruits and/or vegetables are prohibited for sampling.
- ❖ Reconstituted foods are prohibited; products such as dips or "**reconstituted**" condiments and/or sauces shall not be offered; unless specifically approved by this department.
- ❖ No open, unmonitored, or unprotected trays or serving bowls may be used. Covered "domes" or other similar protective appliances may be utilized for product sampling.
- ❖ Public self-serve of product from communal trays and/or basins is not acceptable. Viral & bacterial cross-contamination is the issue.
- ❖ Only single service wares may be utilized; cups, spoons, etc. shall be disposable and must be kept in a protected location.
- ❖ Provide a copy of your manufacturer's license to this office, if applicable.

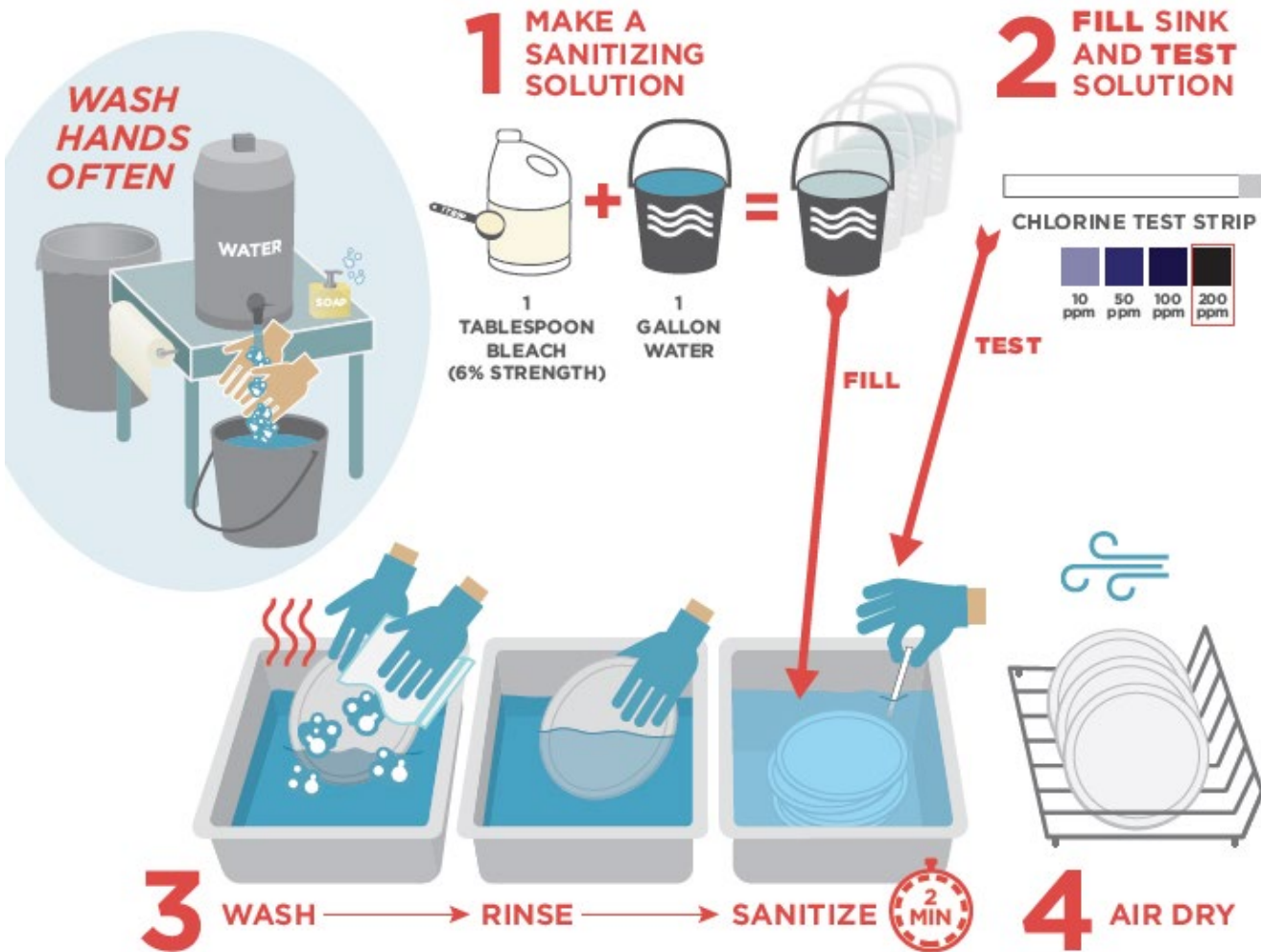
TEMPORARY FOOD ESTABLISHMENT HAND WASHING STATION



The container holding the water must have a spigot valve that allows continuous free flowing of water to properly wash your hands.

The valves that are on most water jugs are not allowed. **(No push Buttons)**

Clean & Sanitize POTS, PANS, GLASSES, DISHES, AND UTENSILS for Temporary Outdoor Food Booths



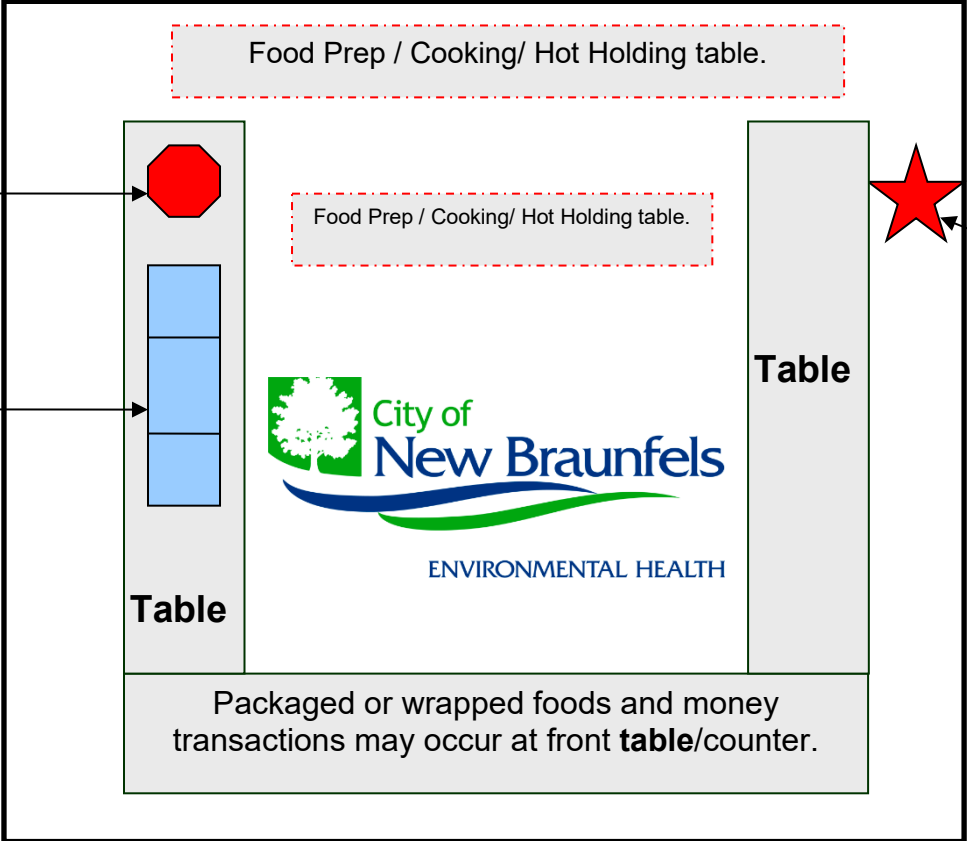
Scientific experts from the U.S. Centers for Disease Control and Prevention and the U.S. Food and Drug Administration helped to develop this poster.

BBQ pit area shall be restricted from public access. A minimum 10' foot setback shall be maintained from all combustibles including the booth. No open flame grills permitted, and no sterno is allowed.



Required Hand washing Station
(Location Optional)

Required 3 compartment sink, or 3 wash basins for washing food contact equipment on site. Wash, Rinse, Sanitize.



Fire Extinguisher
(Location Optional)

Over head cover and table skirting with restriction of access to public is required. Groundcover must be concrete, asphalt, wood, or other Dept approved ground cover.

**FRONT OF BOOTH:
NO FOOD PRODUCTION IS ALLOWED.**

Sample Booth Layout