



CITY COUNCIL

Project Details

City of New Braunfels
City Hall – Tejas Room
November 21, 2022

CITY OF NEW BRAUNFELS
PROPOSED
BOND 2023



BOND ADVISORY COMMITTEE PROCESS & SCHEDULE

Monday, September 19, 2022

*Proposed 2023 Bond Process, Project Overview,
Project Recommendation Process and Schedule*

Monday, October 3, 2022

Project Details

Thursday, October 6, 2022

Public Input and Project Ranking Direction

Monday, October 17, 2022

*Present Initial Project Rankings, Discussion and
Recommendation to City Council*



BOND ADVISORY COMMITTEE RECOMMENDATION

Rank	Project Name	Category	Funding Recommendation	Running Total
1	Barbarosa Rd/Saur Ln Phase 1 (FM 1101 - Saengerhalle Rd)	Transportation	\$ 12,125,000	\$ 12,125,000
2	Citywide Street Improvements Option 2: 19 lane miles	Transportation	\$ 20,000,000	\$ 32,125,000
3	Common Street Pedestrian Improvements (Liberty Ave - Loop 337)	Transportation	\$ 1,615,000	\$ 33,740,000
4	Common St (Loop 337 - FM 306)	Transportation	\$ 24,783,000	\$ 58,523,000
5	Conrads Ln (Goodwin Ln - FM 1102)	Transportation	\$ 11,802,000	\$ 70,325,000
6	Kohlenberg Rd (FM 1101 - IH 35)	Transportation	\$ 15,932,000	\$ 86,257,000
7	Citywide Intersection Improvements Phase 1	Transportation	\$ 5,210,656	\$ 91,467,656
8	Landa Lake Dam and Spillway Improvements	Drainage	\$ 1,180,000	\$ 92,647,656
9	Southeast Library Branch	Library	\$ 28,560,000	\$ 121,207,656
10	Citywide Pedestrian Improvements Phase 1: 6 locations	Transportation	\$ 3,179,635	\$ 124,387,291
11	S Kowald Lane (FM 1101 - IH 35)	Transportation	\$ 10,739,000	\$ 135,126,291
12	Comal River Improvements: Last Tubers Exit Phase 1	Parks	\$ 944,100	\$ 136,070,391
13	Alligator Creek Linear Park & Trail (West Section)	Parks	\$ 3,541,000	\$ 139,611,391
14	Castell Ave Corridor (Mill St - Bus 35/Elliot Knox Blvd) Phase 1: Drainage	Drainage	\$ 5,905,000	\$ 145,516,391
15	Mission Hill Park Phase 2	Parks	\$ 12,155,000	\$ 157,671,391
16	Orion Dr (Goodwin Ln - FM 1102)	Transportation	\$ 10,267,000	\$ 167,938,391
17	Dry Comal Creek Trail: Segment 2 Feasibility & Conceptual Design	Parks	\$ 300,000	\$ 168,238,391
18	Solms Rd (IH 35 - FM 482)	Transportation	\$ 4,839,000	\$ 173,077,391
19	Landa Park Circulation Improvements: Phase 1	Transportation	\$ 2,790,000	\$ 175,867,391
20	Faust St/Nacogdoches Ave Improvements Phase 2: Nacogdoches Ave Area	Drainage	\$ 11,263,558	\$ 187,130,949

PROJECT DETAILS

Location

Phasing

Scope

*Recommended Cost
Estimate*

Typical Section/Layout

Leverage Funding

Risks/Constraints

Funding Need

Next Steps

COST ESTIMATE

(FINAL DESIGN, ROW, UTILITIES, CONSTRUCTION, PROJECT MANAGEMENT, ADD)

Initial

- Prepared in 2021 based on existing plans, studies, and cost estimates
- Escalated to 2023 bond program year

Preliminary Design

- Prepared in 2022 by preliminary design consultants and coordinated with 3rd party cost estimator
- Escalated to 2023 bond program year

Recommended

- Preliminary design cost estimate plus staff and updated inflation
- Escalated to 2026 average project construction date

LEVERAGED FUNDING

Opportunities

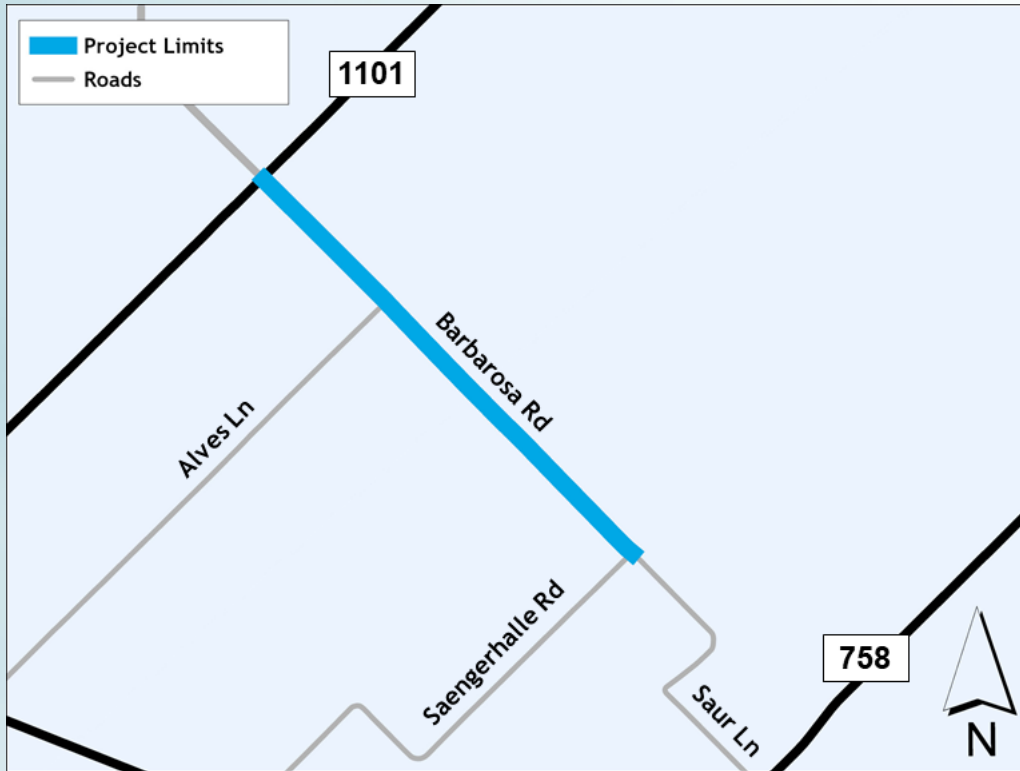
- Secured – Funding awarded
- Possible – Funding possible through related program and application process

Programs

- AAMPO – Alamo Area Metropolitan Planning Organization
- NBEDC – New Braunfels Economic Development Corporation
- RIF – City Roadway Impact Fee Program
- TWDB – Texas Water Development Board
- TPWD – Texas Parks and Wildlife Department
- TIRZ – Tax Increment Reinvestment Zone

1. BARBAROSA RD/SAUR LN (FM 1101 – SAENGERHALLE RD)

Project Location Map



Project Scope

Widening to four lanes

Intersection improvements

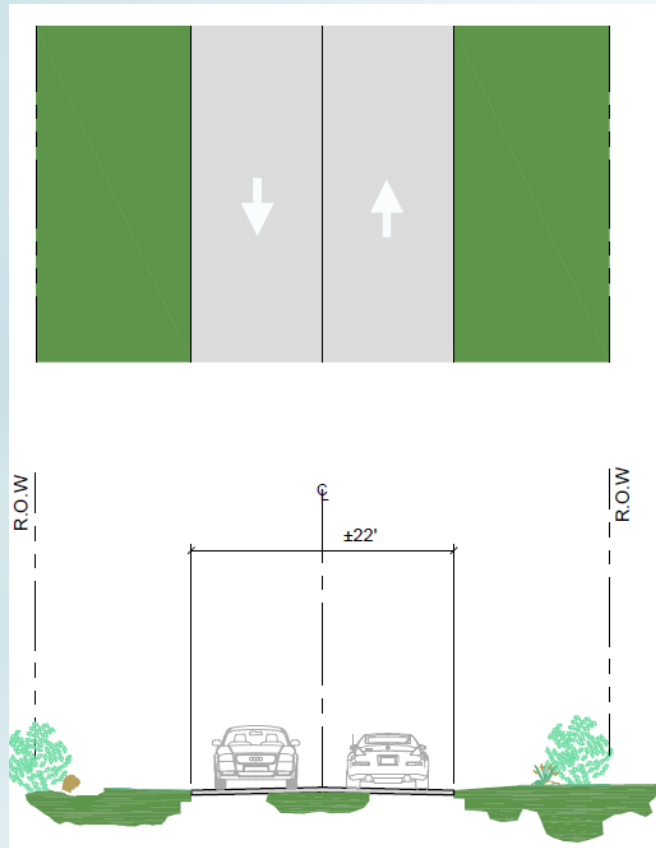
Sidewalk & shared-use path

Driveway approaches

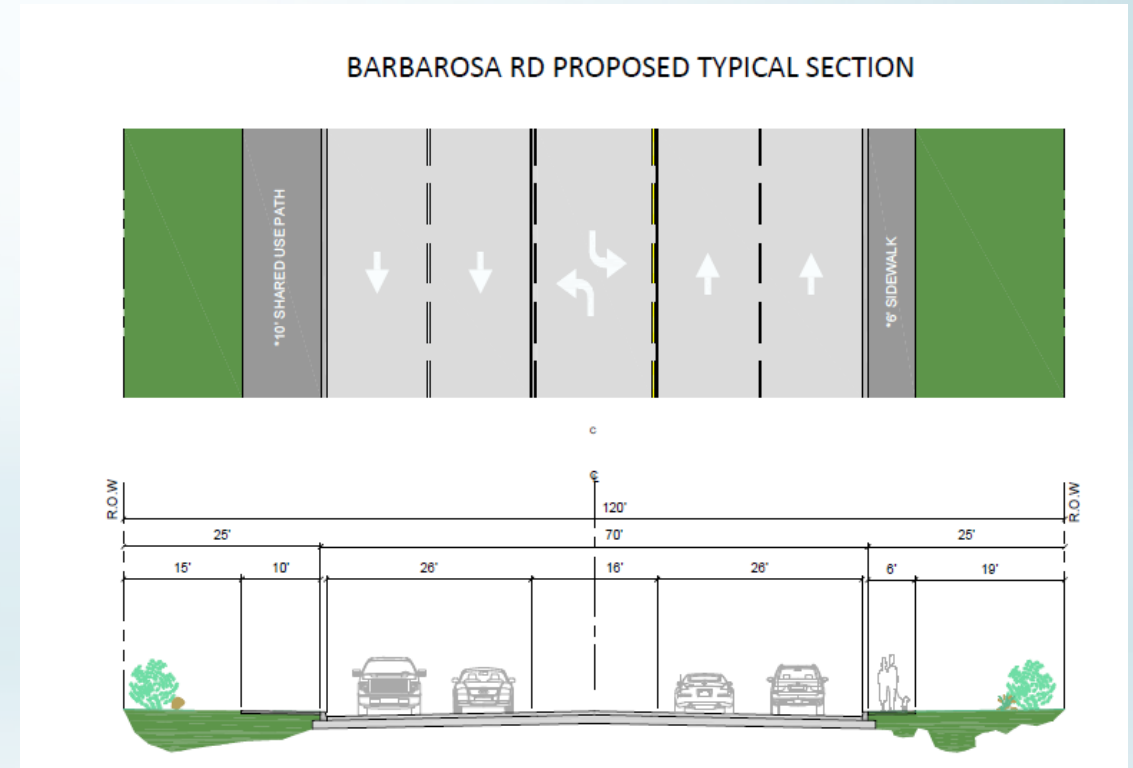
Drainage

1. BARBAROSA RD/SAUR LN (FM 1101 – SAENGERHALLE RD)

Existing Typical Section



Proposed Typical Section



1. BARBAROSA RD/SAUR LN

(FM 1101 – SAENGERHALLE RD)

Risks/Constraints

Federal funding process

New Braunfels National Airport restrictions

Limited right-of-way

Next Steps

Final Design (consultant selection) – 2024

Est. Construction – 2027

Cost Estimate

\$21,125,000 (Total)

Leveraged Funding

Secured: AAMPO – \$9M

*Considering covering a
portion of cost increases*

Possible:

NBEDC, Creekside TIRZ, RIF #6

Funding Need

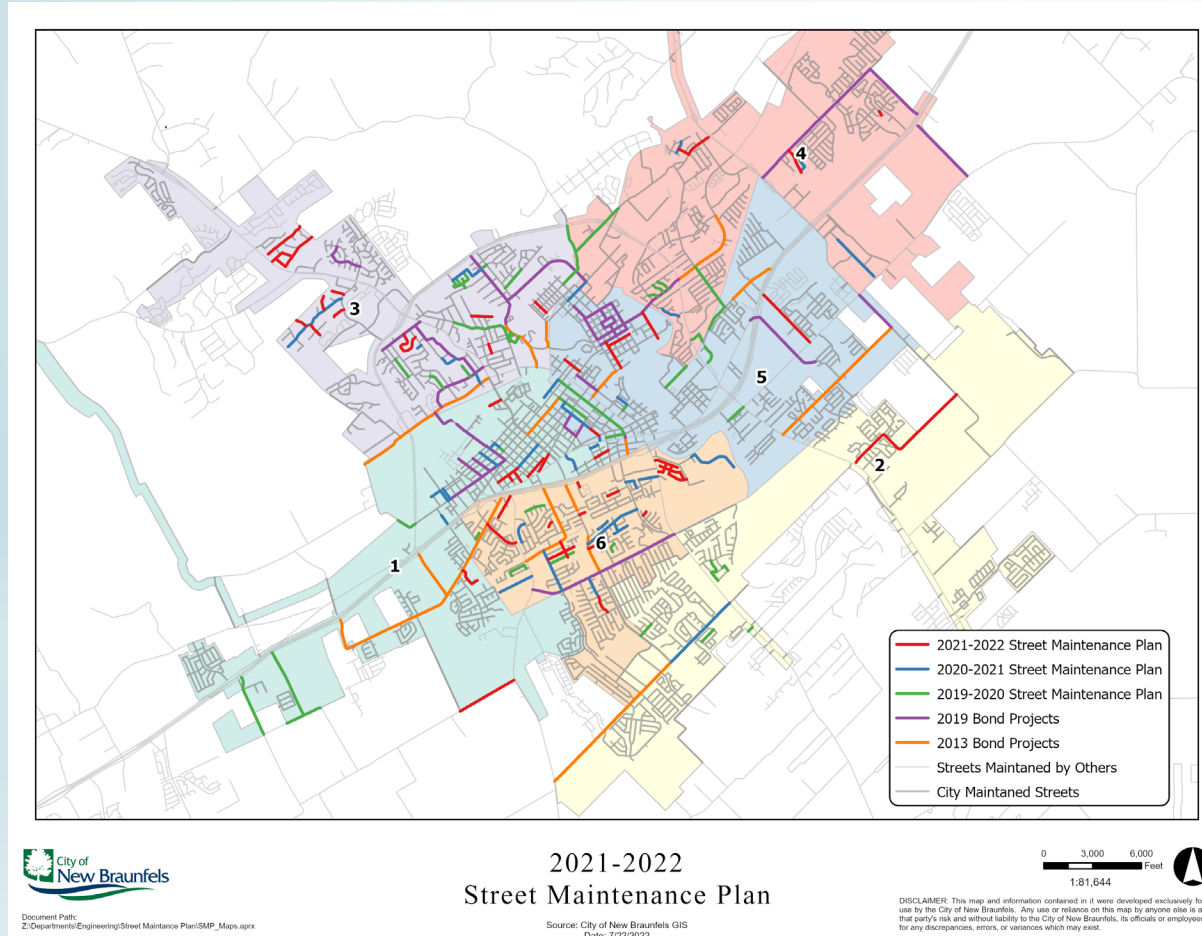
\$12,125,000

2. CITYWIDE STREET IMPROVEMENTS

- Extensive pavement rehabilitation of city streets
- Rehabilitation includes improving curbs, driveway, sidewalks, curb ramps, and addressing ADA issues
- Funding options
 1. \$25M – 26 Lane Miles
 2. \$20M – 19 Lane Miles
 3. \$15M – 13 Lane Miles



2. CITYWIDE STREET IMPROVEMENTS



Potential Program Streets

Common St

(Liberty Ave – Loop 337)

W San Antonio St

(LP 337 – Krueger Ave, Walnut Ave – Spur St)

S Water Ln

(W San Antonio St – IH 35)

Dove Crossing Area

S Union Ave

(Common St – Lincoln St)

McQueeney Rd

(IH 35 – W County Line Rd)

2. CITYWIDE STREET IMPROVEMENTS

Risks/Constraints

Utilities

Next Steps

Update pavement scores

Final Design – 2023-2026

Est. Construction – 2023-2027

Phasing

Adjust funding amount

Cost Estimate

Recommended Funding
\$20,000,000 (19 lane miles)

--

2013 Bond – \$10,000,000

2019 Bond – \$15,000,000

Funding Need

\$20,000,000

3. COMMON ST PEDESTRIAN IMPROVEMENTS (LIBERTY AVE – LOOP 337)

Project Location Map



Project Scope

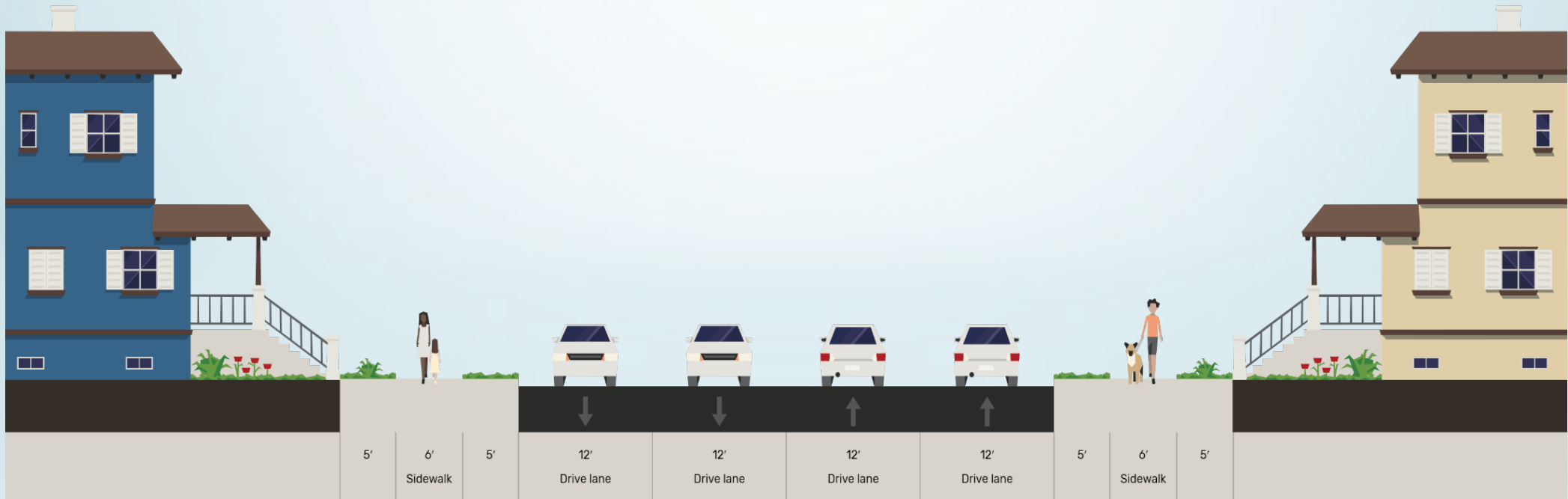
New sidewalks and curb ramps

Protected pedestrian crossings at
Central Ave & Library/Fairgrounds

Driveway approaches

3. COMMON ST PEDESTRIAN IMPROVEMENTS (LIBERTY AVE – LOOP 337)

Proposed Typical Section



3. COMMON ST PEDESTRIAN IMPROVEMENTS (LIBERTY AVE – LOOP 337)

Risks/Constraints

Federal funding process
Property owner coordination
Utilities

Next Steps

Final Design (in progress)
TxDOT Agreement
Est. Construction – 2024

Cost Estimate

\$2,715,000

Leveraged Funding

Secured: AAMPO - \$1,100,000

*Considering covering a
portion of cost increases*

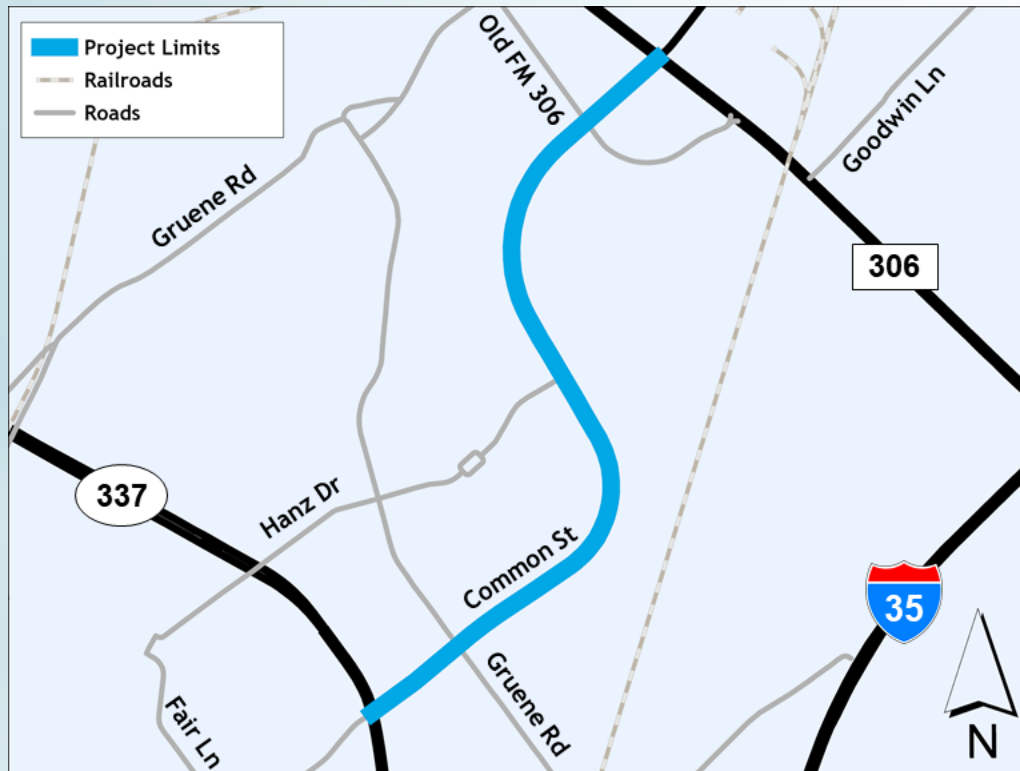
Possible: NBEDC

Funding Need

\$1,615,000

4. COMMON ST (LOOP 337 – FM 306)

Project Location Map



Project Scope

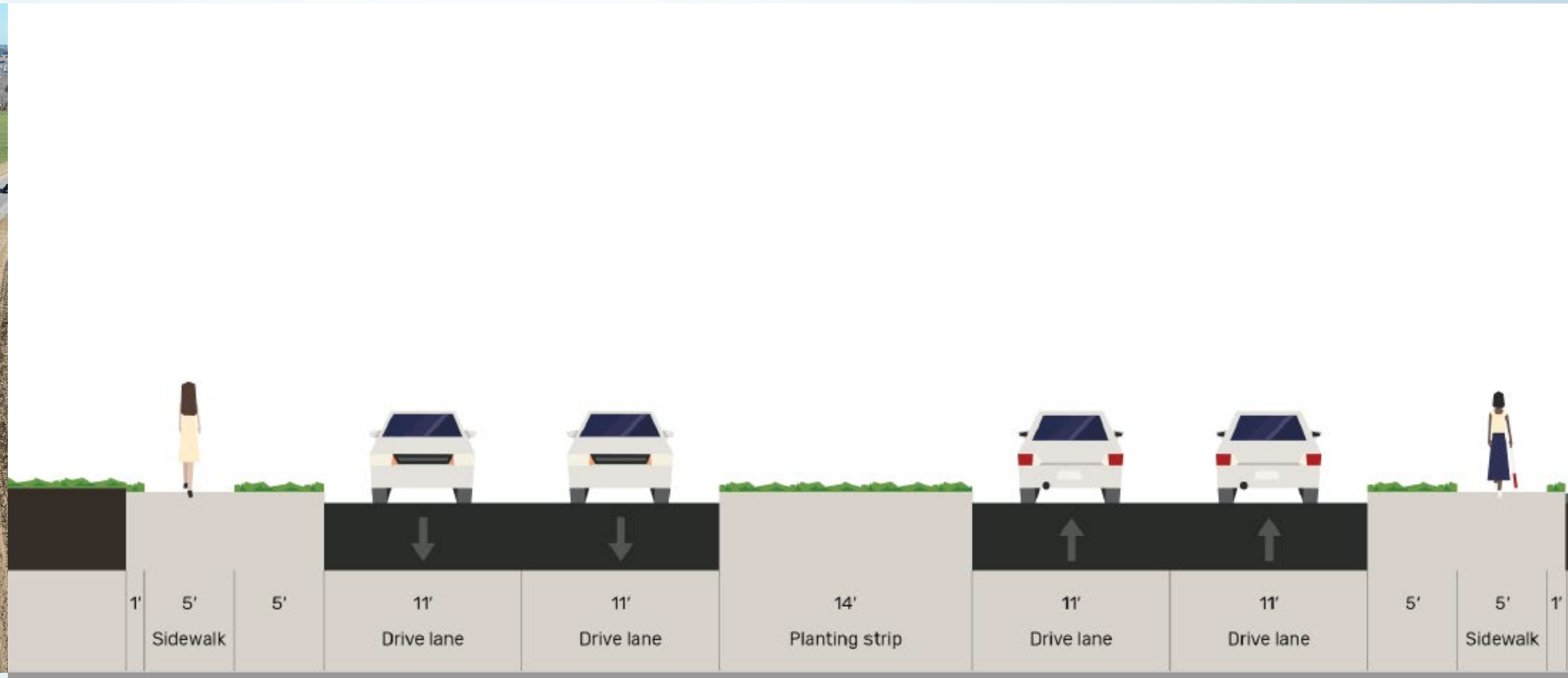
Widen to four lanes
Intersection improvements
Traffic signals
Sidewalks
Driveway approaches
Drainage

4. COMMON ST (LOOP 337 – FM 306)

Existing Typical Section



Proposed Typical Section



4. COMMON ST

(LOOP 337 – FM 306)

Risks/Constraints

Driveway and business access

Limited right-of-way

Regional drainage

TxDOT coordination

Next Steps

Final Design

Est. Construction – 2026

Cost Estimate

\$24,783,000

Leveraged Funding

Possible:

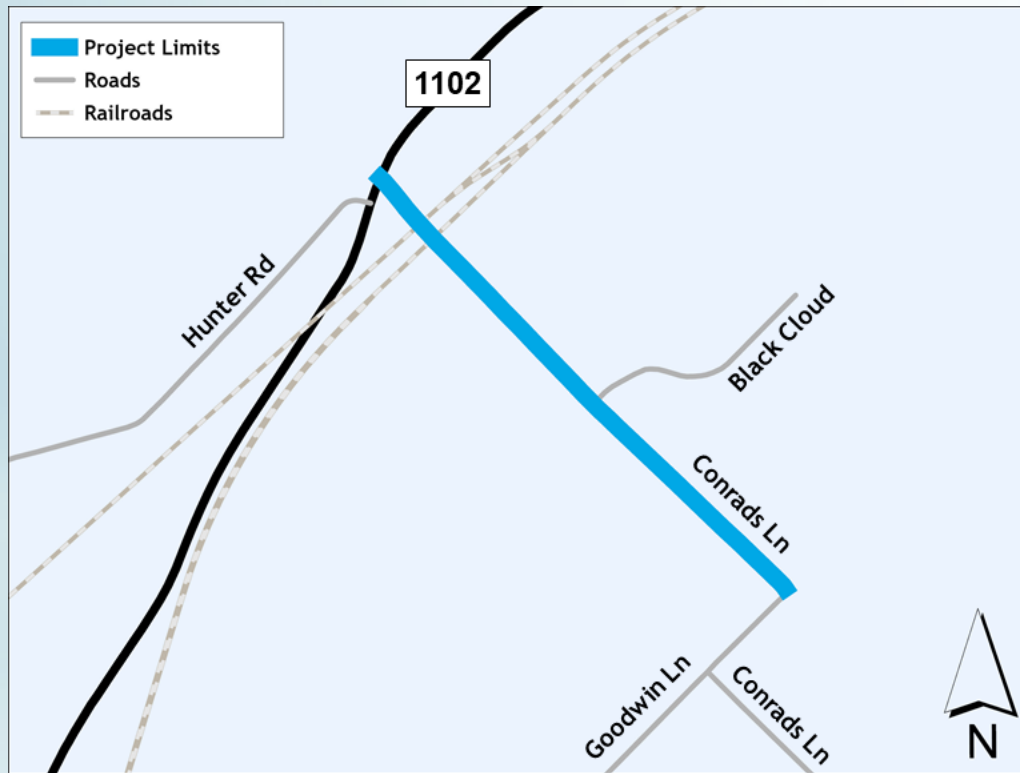
NBEDC, RIF #3

Funding Need

\$24,783,000

5. CONRADS LN (GOODWIN LN – FM 1102)

Project Location Map



Project Scope

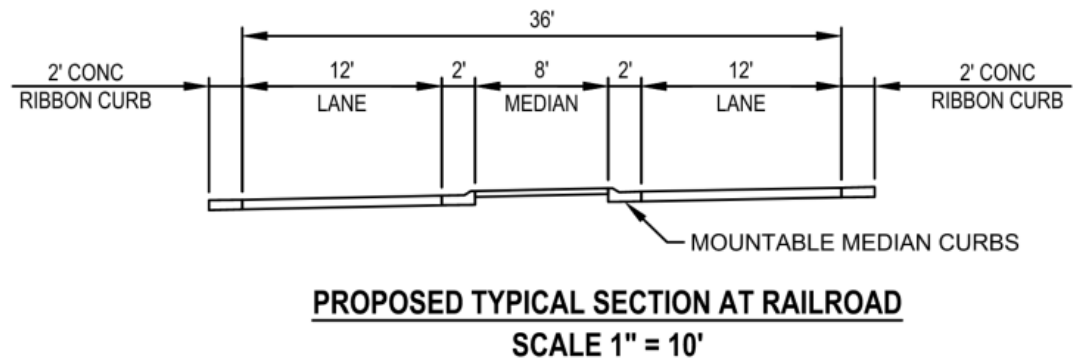
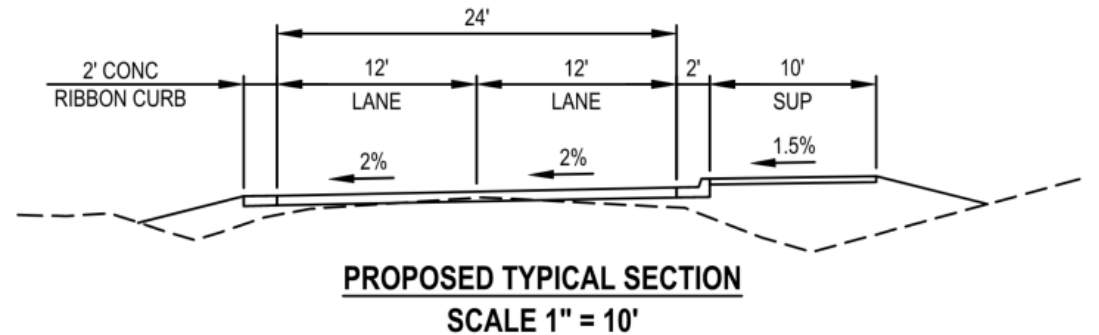
Pavement rehabilitation
Intersection improvements
Roundabout at curve
Railroad crossing improvements
Shared use path
Driveway approaches
Drainage

5. CONRADS LN (GOODWIN LN – FM 1102)

Existing Typical Section



Proposed Typical Section



5. CONRAD'S LN (GOODWIN LN – FM 1102)

Risks/Constraints

Union Pacific Railroad (UPRR)
Comal County and TxDOT Right-of-way
Environmental

Next Steps

Agency Coordination
Final Design
Est. Construction – 2027

Phasing

City and Comal County Segments

Cost Estimate

\$11,802,000
City – \$10,860,000
Comal County – \$942,000

Leveraged Funding

Possible:
Comal County, RIF #3

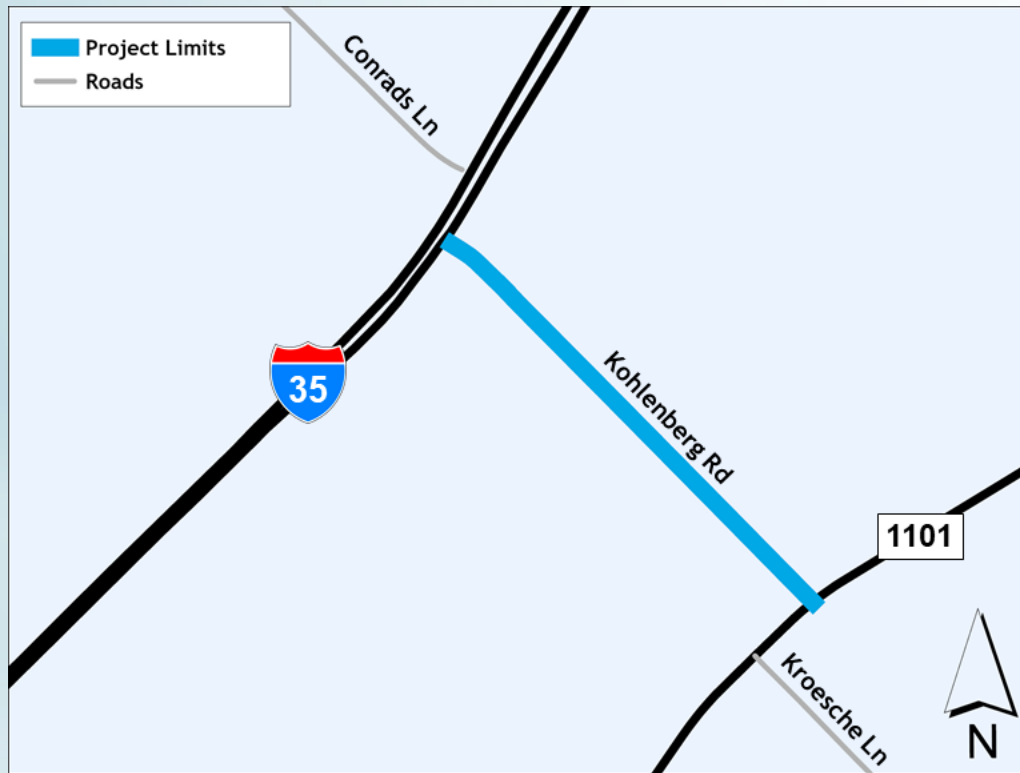
Funding Need

\$11,802,000

6. KOHLENBERG RD

(IH 35 – FM 1101)

Project Location Map



Project Scope

Widen to four lanes
Intersection improvements
Sidewalk and shared use path
Driveway approaches
Drainage

6. KOHLENBERG RD

(IH 35 – FM 1101)

Existing Typical Section



Proposed Typical Section



6. KOHLENBERG RD

(IH 35 – FM 1101)

Risks/Constraints

Gas utilities

Construction phasing

Continental access

TxDOT coordination

Next Steps

Final Design

Est. Construction – 2025

Cost Estimate

\$15,932,000

Leveraged Funding

Possible:

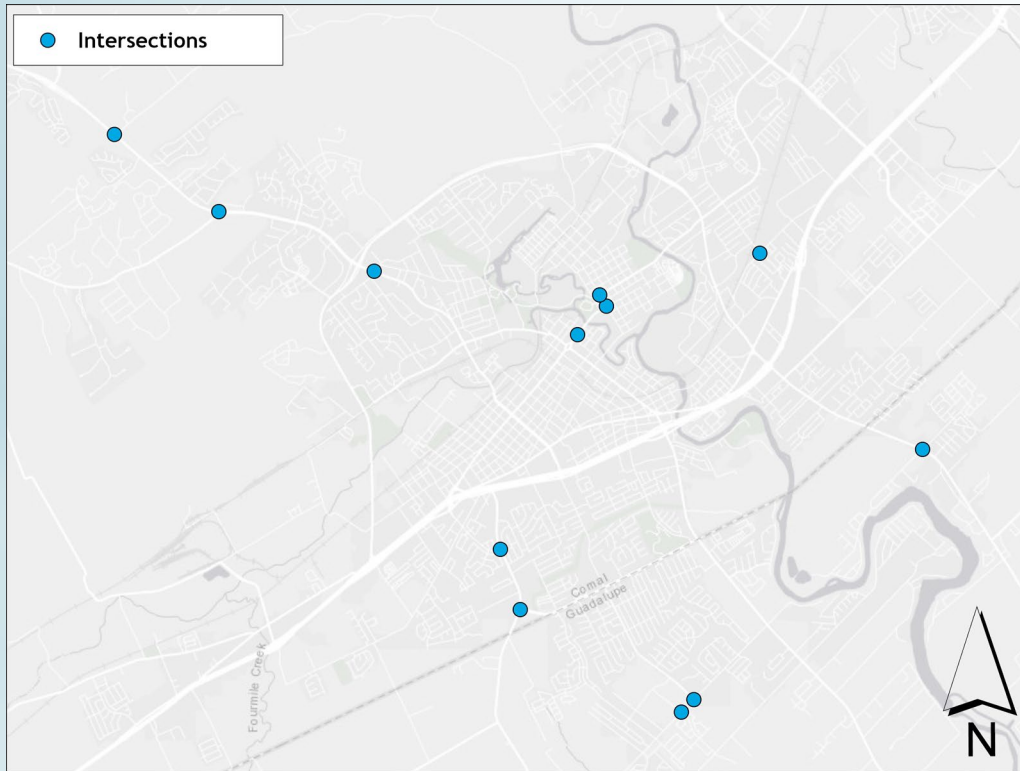
NBEDC, RIF #3, Mayfair

Funding Need

\$15,932,000

7. CITYWIDE INTERSECTION IMPROVEMENTS

Project Location Map



Project Scope

- New signals at warranted locations
- Additional and improved turn lanes
- Additional pedestrian crossings
- Access management
- Safety improvements
- Technology upgrades

Citywide Intersection Improvements – Potential Intersections

Phase 1 - \$5,210,656

San Antonio St & Market Ave
(New Signal)

Walnut Ave & Gardenia Dr
(New Signal)

SH 46 & Hueco Springs Loop Rd
(New Signal)

SH 46 & Mission Valley Rd
(New Signal)

SH 46 & Independence Dr
(Turn Lane Improvements)

SH 46 & FM 1863/Alyssa Way
(Dynamic Signal & Turn Lane Improvements)

Loop 337 & Borchers Blvd/NBHS
(Ped Signal)

Citywide Signal Technology Upgrades
(Radar Detection, Preemption, Equipment)

Phase 2 - \$6,591,344

Post Rd & Gruene Rd
(Realigned Intersection)

SH 46 & Alves Ln
(New Signal)

SH 46 & Mary Blvd/Saengerhalle Rd
(New Signals & Safety Improvements)

Walnut Ave & Ohio Ave/Kerlick Ln
(Safety Improvements)

Union Ave & Common St
(Signal & Ped Improvements)

Union Ave & San Antonio St
(Signal & Ped Improvements)

Klein Rd & Klein Way (Ped Signal) Funded
Replaced w/ Morningside Dr & Schmidt Ave (New Signal)

FM 1044 & Old Marion Rd
(Turn Lane Improvements)

7. CITYWIDE INTERSECTION IMPROVEMENTS

Risks/Constraints

TxDOT right-of-way

TxDOT approval

Utilities

Next Steps

Final Design – 2023-2025

Est. Construction – 2024-2027

Phasing

Select specific intersections

Cost Estimated

\$11,802,000

Recommended Funding

Phase 1 - \$5,210,656

Leveraged Funding

Possible:

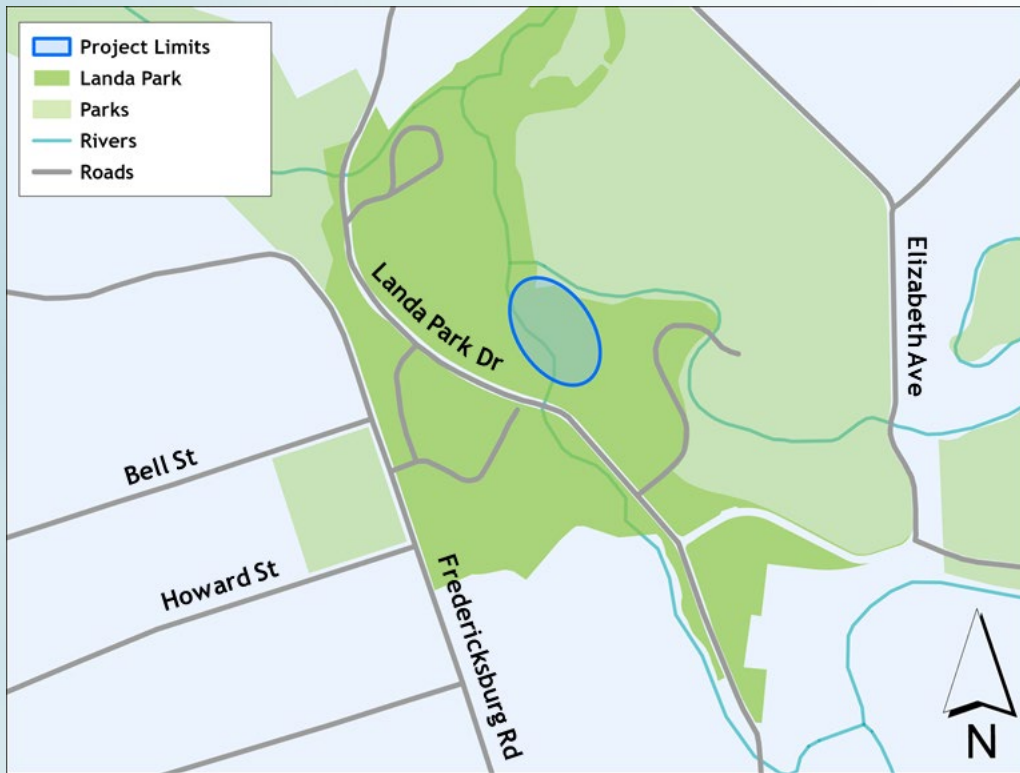
TxDOT Safety Funds, RIF

Funding Need

Phase 1 – \$5,210,656

8. LANDA LAKE DAM & SPILLWAY

Project Location Map



Project Scope

Improve structural integrity of the Landa Lake dam

Address spillway erosion

Meet TCEQ Dam Safety Program requirements

8. LANDA LAKE DAM & SPILLWAY

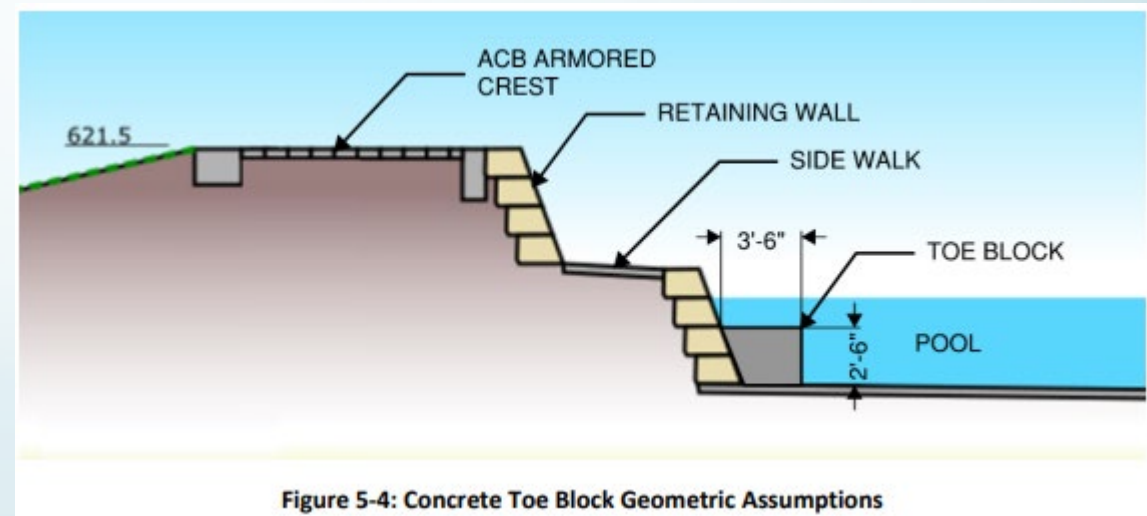
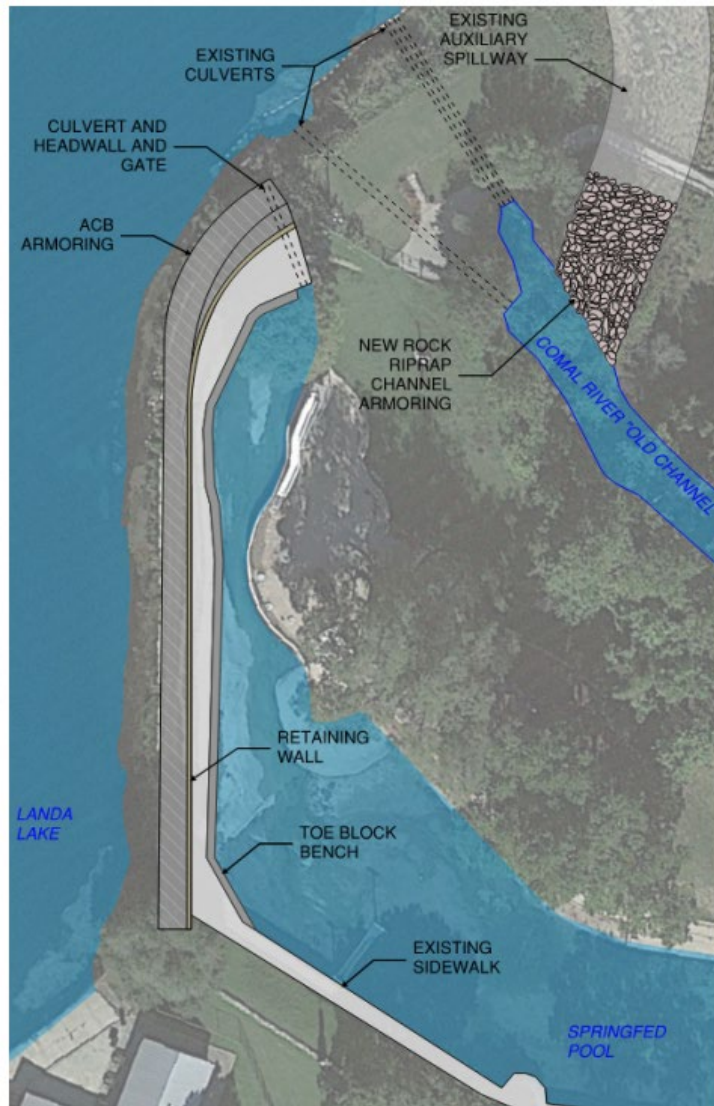


Figure 5-4: Concrete Toe Block Geometric Assumptions

8. LANDA LAKE DAM & SPILLWAY

Risks/Constraints

Environmental and permitting
Work in Landa Lake
Seasonal coordination

Next Steps

Final Design
Est. Construction – 2024

Cost Estimate

\$1,180,000

Leveraged Funding

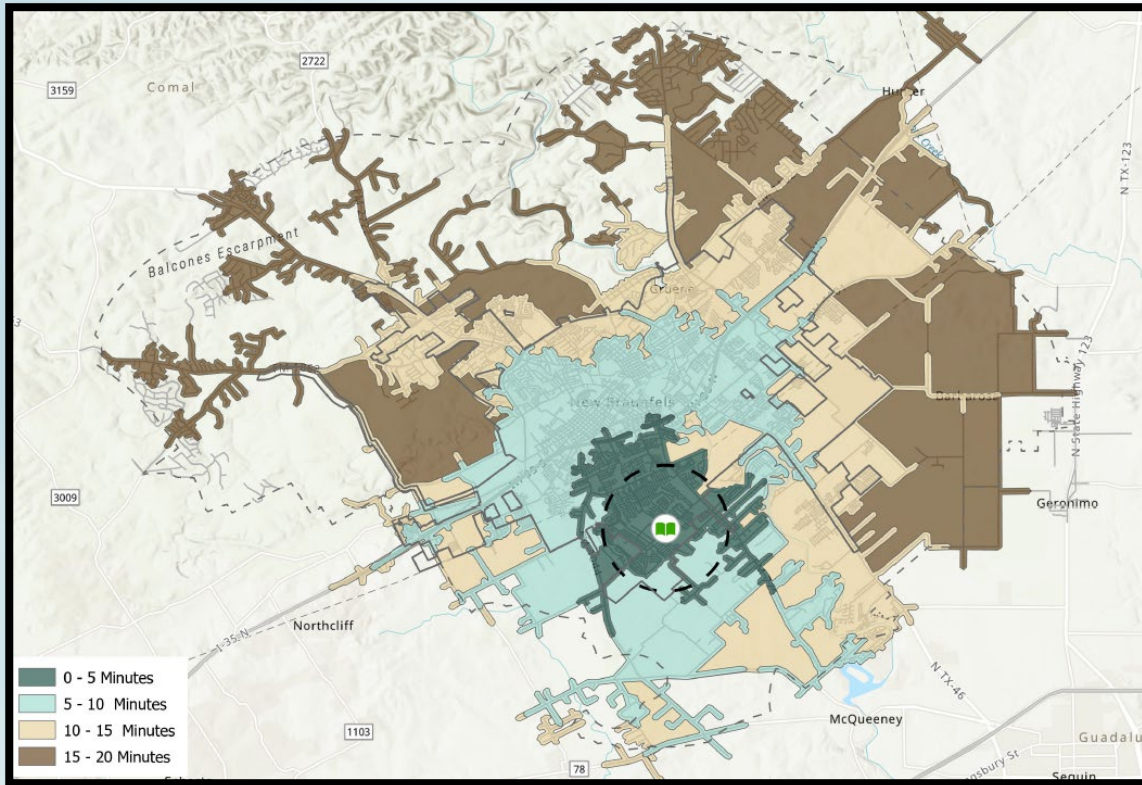
Possible: TWDB

Funding Need

\$1,180,000

9. SOUTHEAST LIBRARY BRANCH

Project Location Map



Project Scope

New branch library

Serve fast growing area

Strong youth and family focus

Six schools within walking distance

9. SOUTHEAST LIBRARY BRANCH

Proposed Site Plan



Exterior Rendering



9. SOUTHEAST LIBRARY BRANCH

Cost Summary

Cost Estimate

Construction Costs (Site and Building)	\$17,600,000
Furnishings and Signing	\$1,100,000
Architect/Engineer Design	\$3,300,000
Owner Direct Costs (technology, collection, testing, etc.)	\$2,200,000
SUBTOTAL	\$24,200,000
Construction Management	\$544,000
Inflation	\$3,816,000
TOTAL	\$28,560,000

9. SOUTHEAST LIBRARY BRANCH

Risks/Constraints

Utility connections

Access and street improvements

Adjacent NBISD traffic

Next Steps

Final design

Est. Construction – 2024

Phasing

None

Cost Estimate

\$28,560,000

Leveraged Funding

Possible:

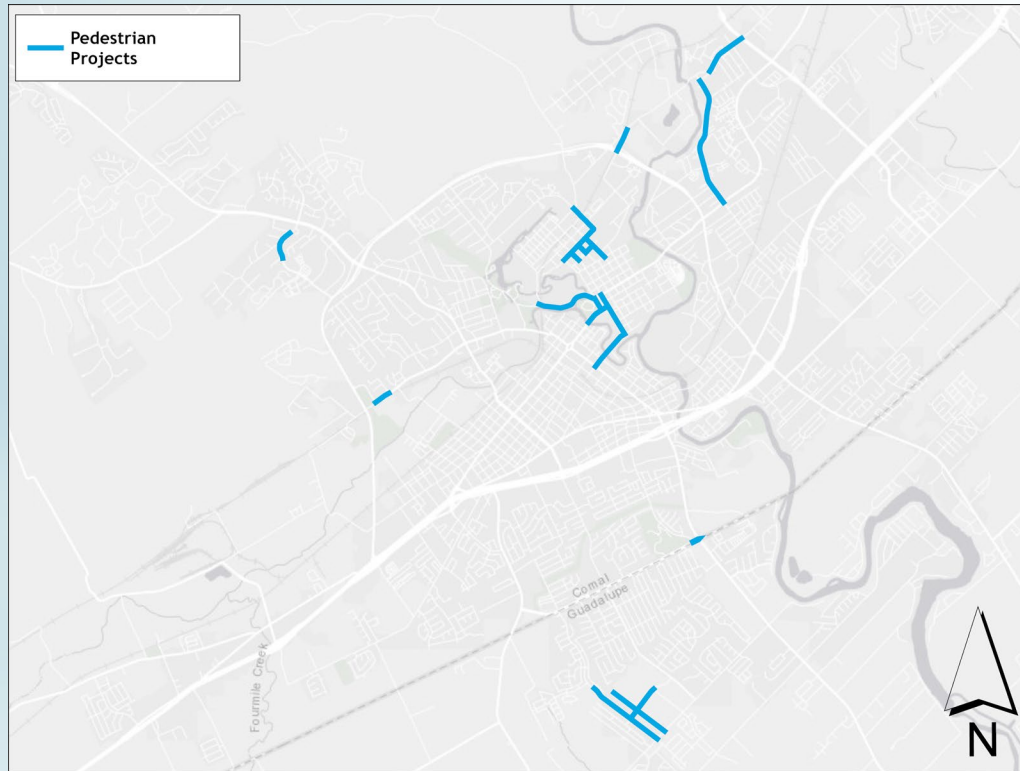
Guadalupe County - Operations

Funding Need

\$28,560,000

10. CITYWIDE PEDESTRIAN IMPROVEMENTS

Project Location Map



Project Scope

- Complete sidewalk gaps
- Improve existing sidewalks and ramps
- Enhance pedestrian crossings
- Address ADA issues
- AAMPO leverage funding

10. CITYWIDE PEDESTRIAN IMPROVEMENTS

POTENTIAL PROGRAM LOCATIONS

Phase 1 - \$3,179,635

New Braunfels MS / Klein Road ES Area

Landa St @ Loop 337

Oak Run Pkwy

Oak Run Pkwy @ Westpointe

Hunter Road (FM 306 – Gruene)

Prince Solms Park

Phase 2 - \$3,901,385

Christus Santa Rosa Hospital Area

Gruene Rd (Loop 337 - Rock Street)

Gruene Rd (Common St – Gruene)

S Union Ave / W Lincoln St / Garden ST

County Line Rd @ FM 725

Sidewalk Gaps and ADA compliance

10. CITYWIDE PEDESTRIAN IMPROVEMENTS

Risks/Constraints

Utilities

Property owner coordination

Next Steps

Final Design – 2023-2025

Est. Construction – 2024-2026

Phasing

Select specific locations

Cost Estimate

\$7,080,750

Recommended Funding

Phase 1 – \$3,179,635

Leveraged Funding

Possible:

AAMPO, NBEDC, TxDOT

Funding Need

Phase 1 – \$3,179,635

11. S KOWALD LN

(IH 35 – FM 1101)

Project Location Map



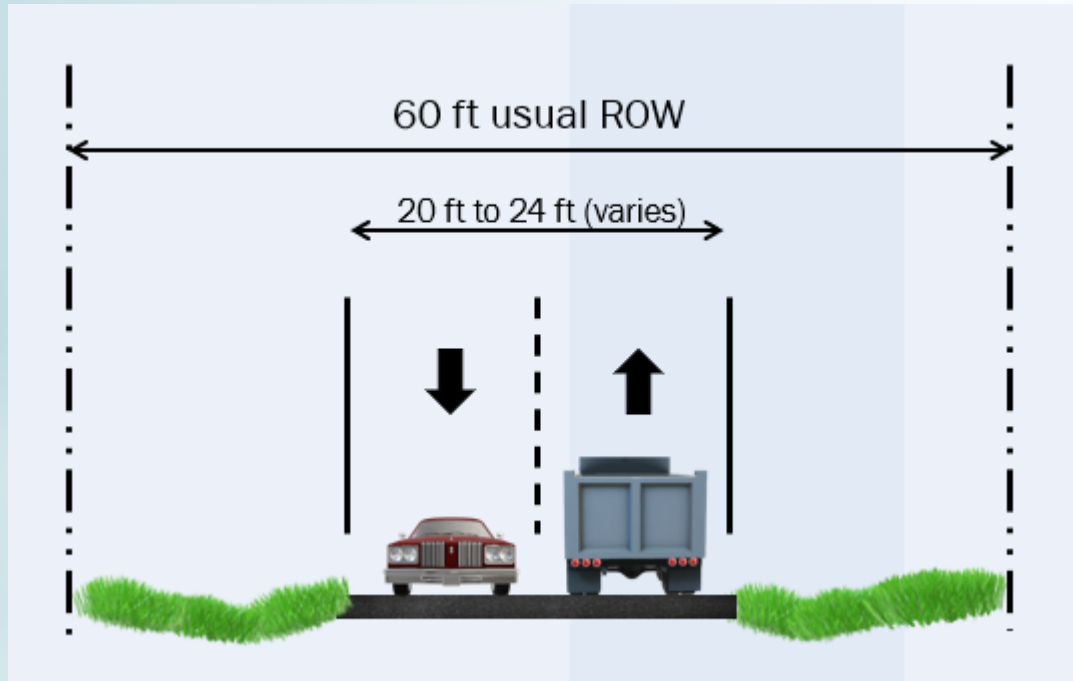
Project Scope

Pavement rehabilitation
Intersection improvements
Sidewalks
Driveway approaches
Drainage

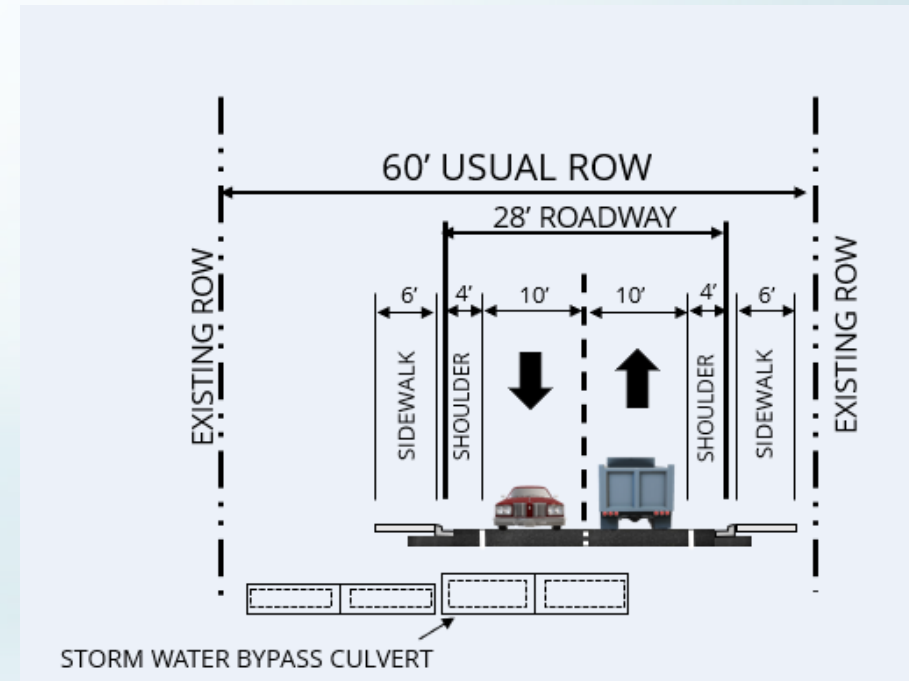
11. S KOWALD LN

(IH 35 – FM 1101)

Existing Typical Section



Proposed Typical Section



11. S KOWALD LN

(IH 35 – FM 1101)

Risks/Constraints

Drainage

Gas utilities

TxDOT coordination

Next Steps

Final Design

Est. Construction – 2025

Cost Estimate

\$10,739,000

Leveraged Funding

Possible:

RIF #3, Developer Escrow

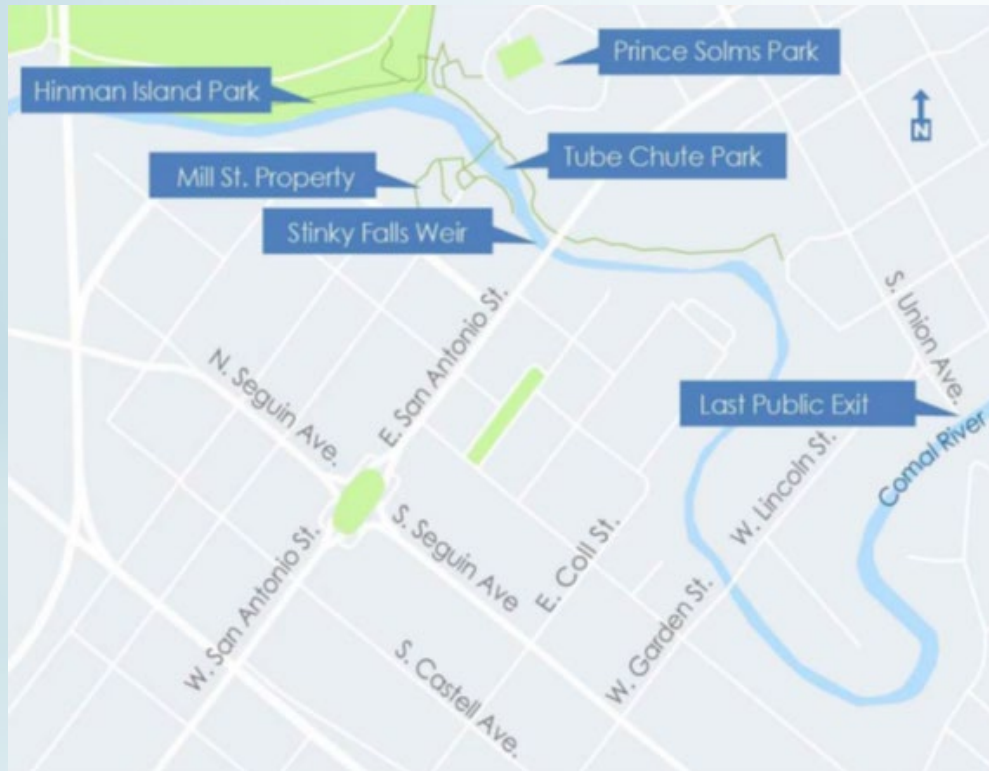
Funding Need

\$10,739,000

12. COMAL RIVER IMPROVEMENTS

LAST TUBERS EXIT PHASE 1

Project Location Map



Overall Project Scope

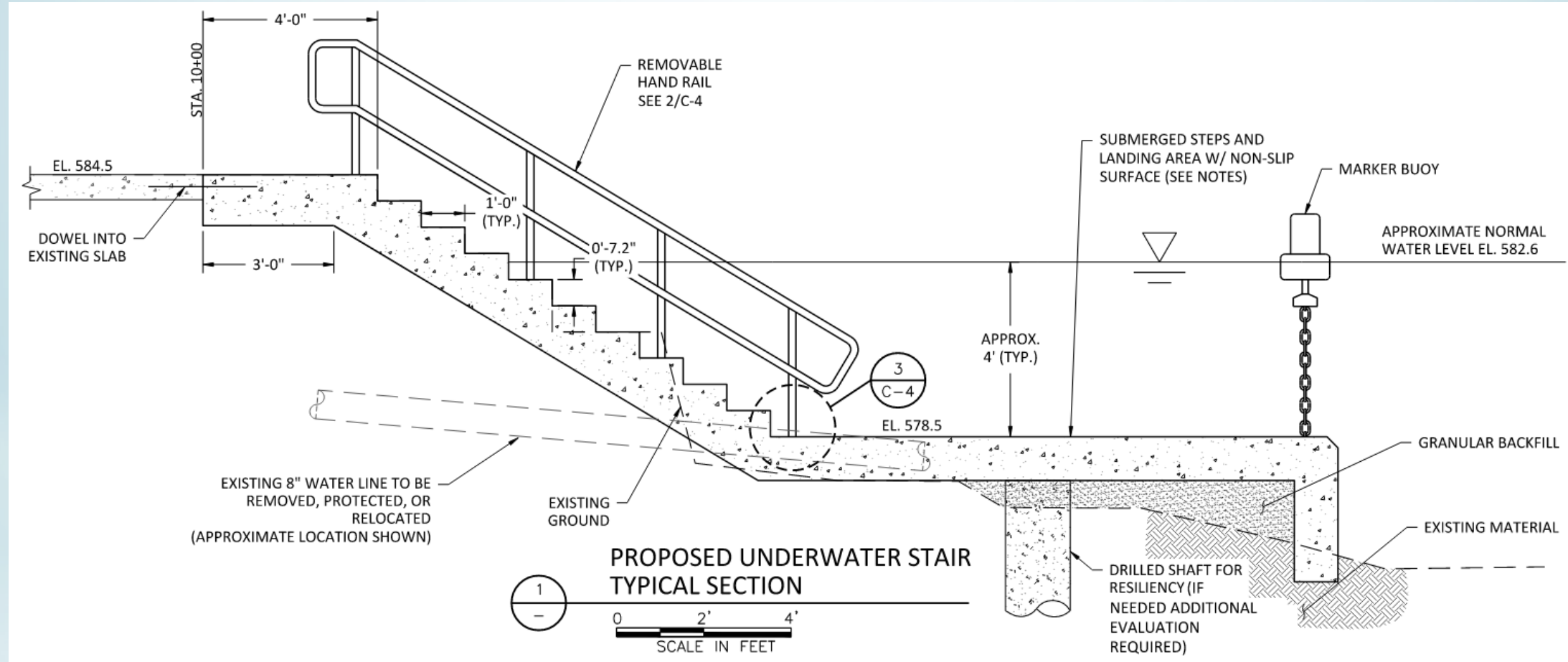
Modify and improve the Tube Chute, Weir Dam #2 and the Last Tubers Exit

Last Tubers Exit Phase 1

Improve underwater stairs

12. COMAL RIVER IMPROVEMENTS

LAST TUBERS EXIT PHASE 1



12. COMAL RIVER IMPROVEMENTS

LAST TUBERS EXIT PHASE 1

Risks/Constraints

Environmental and permitting requirements

Construction timing

Next Steps

Last Tubers Exit Phase 1 – Final Design

Construction

**Tube Chute & Weir Dam #2 –
Preliminary Design due Jan 2023*

Cost Estimate

Last Tubers Exit Phase 1 - \$944,100

**Tube Chute & Weir Dam #2 - \$3,500,000
(based on conceptual design)*

Leveraged Funding

N/A

Funding Need

\$944,100

13. ALLIGATOR CREEK PARK & TRAIL

WEST SECTION

Project Location Map



Project Scope

Trail and associated amenities along Alligator Creek

Recreation opportunities in the northwest area

Connect existing and proposed shared use paths

13. ALLIGATOR CREEK PARK & TRAIL WEST SECTION



City owned area in final design
Focus area for construction

13. ALLIGATOR CREEK PARK & TRAIL

WEST SECTION

Risks/Constraints

Environmental

Regulatory permitting

Development coordination

Goodwin Ln project coordination

Next Steps

Final Design (underway) – 46 Acres

Final Design – 15 Acres

Est. Construction – 2024

Cost Estimate

\$3,541,000

Leveraged Funding

Possible:

NBEDC, Park Development Funds,
TPWD

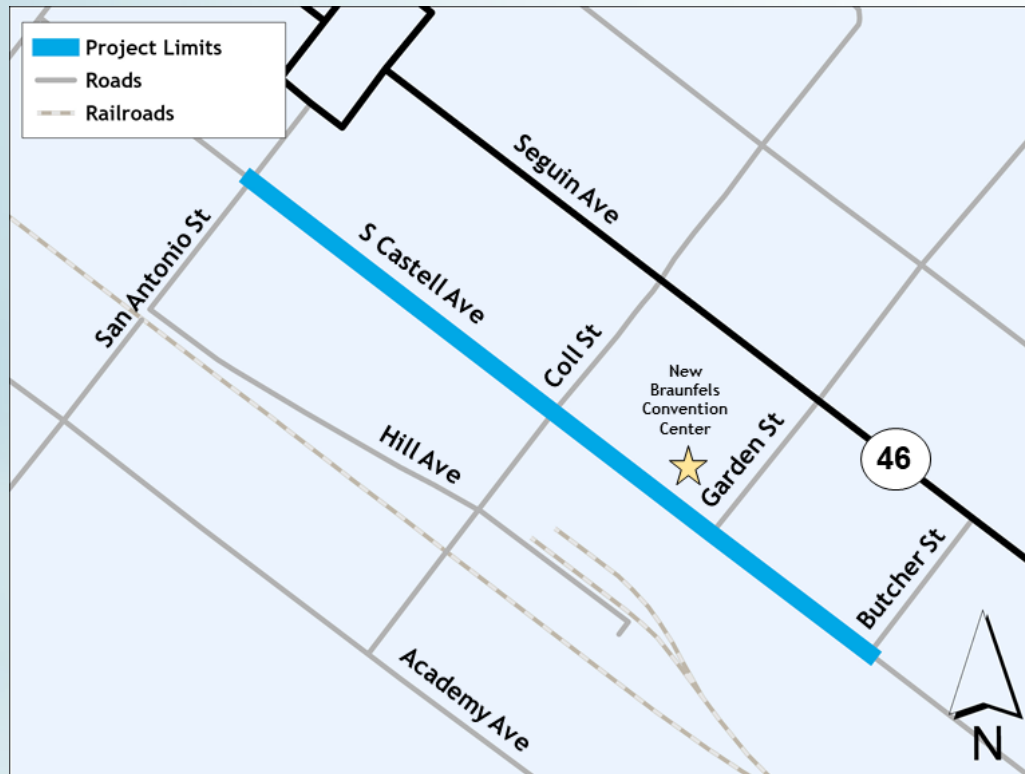
Funding Need

\$3,541,000

14. CASTELL AVENUE CORRIDOR IMPROVEMENTS

PHASE 1: DRAINAGE

Project Location Map



Project Scope

Street reconstruction

Transfer utilities underground

Extensive drainage improvements

Physical infrastructure to enhance safety, comfort and pedestrian experience

- Street trees
- Pocket gardens
- Multi-use sidewalk zone
- Curb extensions/bulb outs
- Street furniture and lighting
- Other pedestrian and bicycle amenities

14. CASTELL AVENUE CORRIDOR IMPROVEMENTS

PHASE 1: DRAINAGE

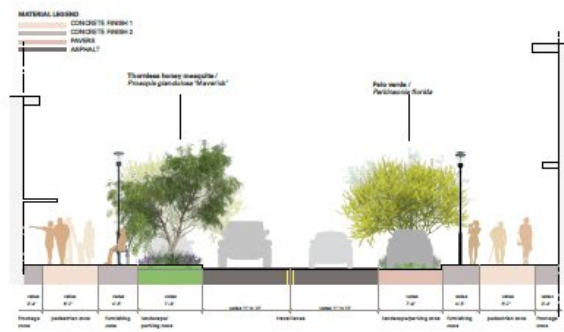


project opportunities:



proposed materials:

downtown core



civic plaza



neighborhood mixed



14. CASTELL AVENUE CORRIDOR IMPROVEMENTS

PHASE 1: DRAINAGE

Risks/Constraints

Drainage

Utilities

Property owner access

UPRR

Redevelopments

Next Steps

Final Design

Phasing

Drainage and corridor segments

Estimated Cost

\$44,255,000

Recommended Drainage - \$5,905,000

Bridge St – Coll St - \$12,508,000

Coll St – Jahn St - \$14,396,000

Jahn St – Bus 35 - \$11,446,000

Leveraged Funding

Possible:

NBEDC, Downtown TIRZ, TWDB, Development partnership

Funding Need

Recommended Drainage – \$44,255,000

15. MISSION HILL PARK

PHASE 2

Project Location Map



Project Scope

Observation towers and natural surface trails

Overflow parking and restrooms

Exterior deck and elevated boardwalk

Educational exhibits

15. MISSION HILL PARK

PHASE 2



15. MISSION HILL PARK

PHASE 2

Risks/Constraints

Edwards Aquifer Recharge Zone

Archeological

Access

Next Steps

Final Design

Est. Construction - 2024

Cost Estimate

\$12,155,000

Leveraged Funding

Possible:

Park Development Fee, TPWD

Funding Need

\$12,155,000

15. MISSION HILL PARK

PHASE 2

Phasing

Site Infrastructure - \$6,855,000

- Parking, trails, & education space
- Site utilities (current and future)

Tower - \$3,900,000

- Three story observation tower
- Restrooms, classroom, & elevator

Elevated Boardwalk – \$1,400,000

- Steel frame structures

Cost Estimate

\$12,155,000

Tower Revisions

May be able to reduce costs
Requires redesign and coordination

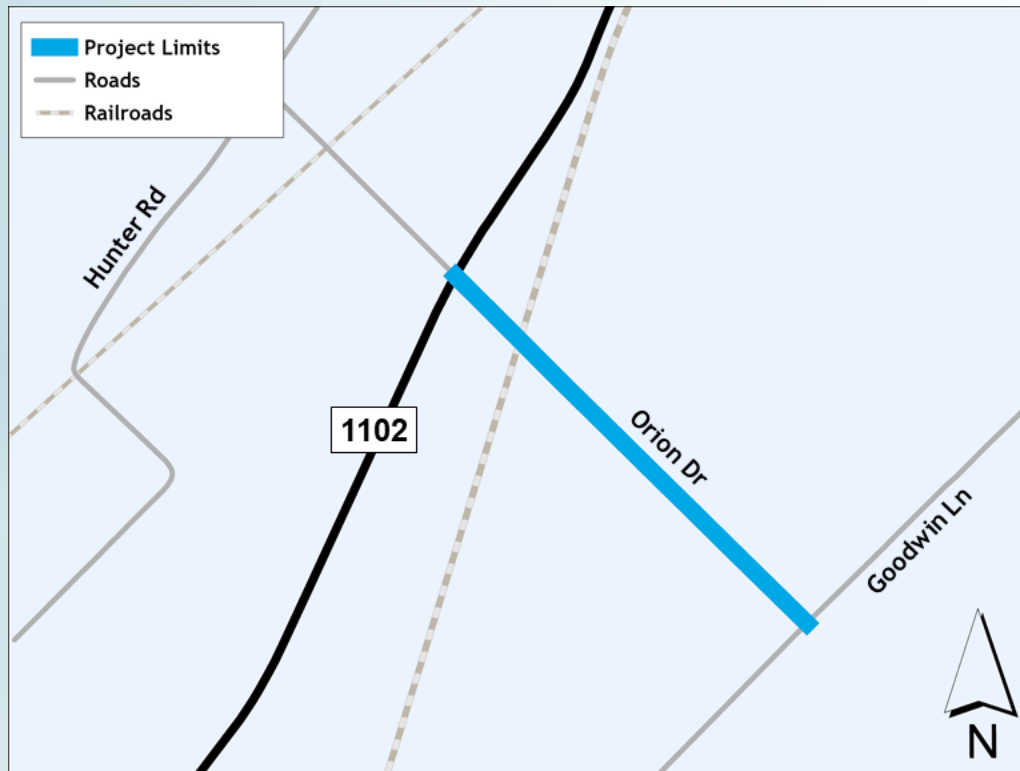
Phasing Risks

Construction equipment on permanent
drive aisle and parking area

16. ORION DR

(GOODWIN LN – FM 1102)

Project Location Map



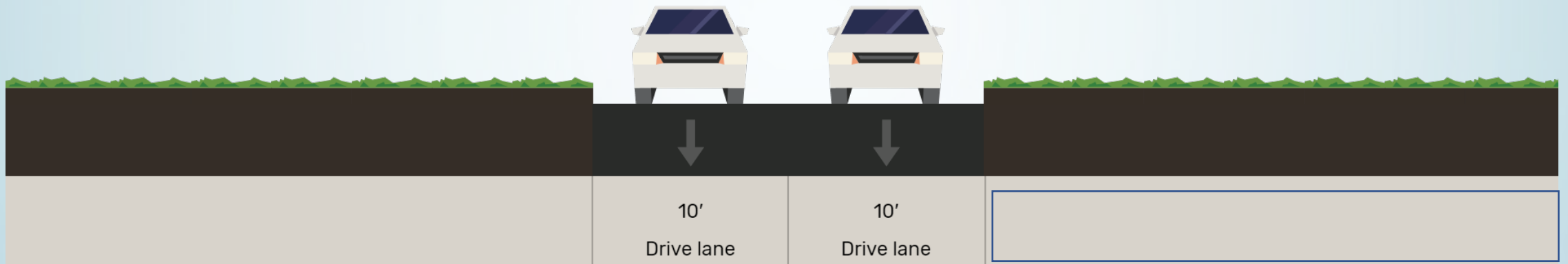
Project Scope

Roadway improvements
Intersection improvements
Railroad crossing improvements
Sidewalk and shared use path
Driveway approaches
Drainage

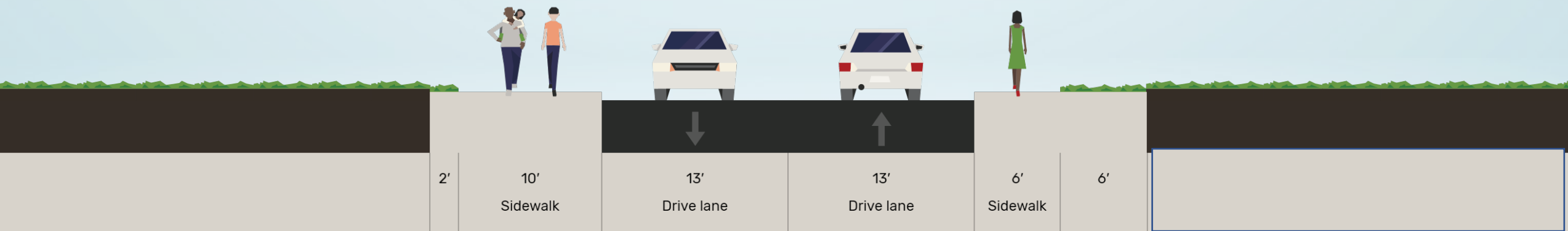
16. ORION DR

(GOODWIN LN – FM 1102)

Existing Typical Section



Proposed Typical Section



16. ORION DR

(GOODWIN LN – FM 1102)

Risks/Constraints

Union Pacific Railroad (UPRR)
Comal and TxDOT right-of-way

Next Steps

Agency Coordination
Final Design
Est. Construction – 2027

Phasing

City and Comal County Segments

Cost Estimate

\$10,267,000
City – \$6,727,000
Comal County – \$3,540,000

Leveraged Funding

Possible:
RIF #3, Comal County, Developer Escrow

Funding Need

\$10,267,000

17. DRY COMAL CREEK TRAIL (LOOP 337-WALNUT AVENUE)

Project Location Map



Project Scope

Feasibility study and conceptual design for Segment 2 (Loop 337 – Walnut Ave):

- Topography evaluation
- Drainage/floodplain considerations
- Preliminary trail routing
- property needs analysis
- regulatory coordination
- public involvement

17. DRY COMAL CREEK TRAIL

(LOOP 337-WALNUT AVENUE)

Project Risks/Constraints

Acquiring right-of-way

Property owner coordination

Estimated Cost

\$300,000

Next Steps

Feasibility study and conceptual design

Leveraged Funding

Possible:

TPWD, Other grants/partnerships

Funding Need

\$300,000

18. SOLMS RD

(IH 35 – FM 482)

Project Location Map

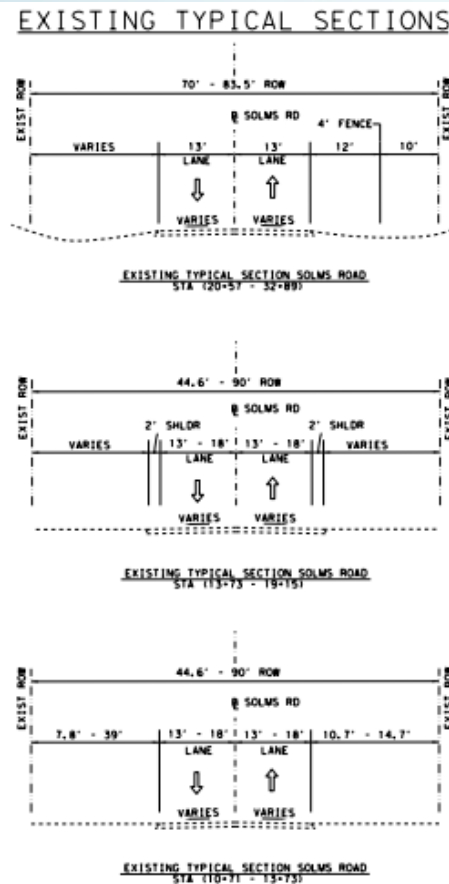


Project Scope

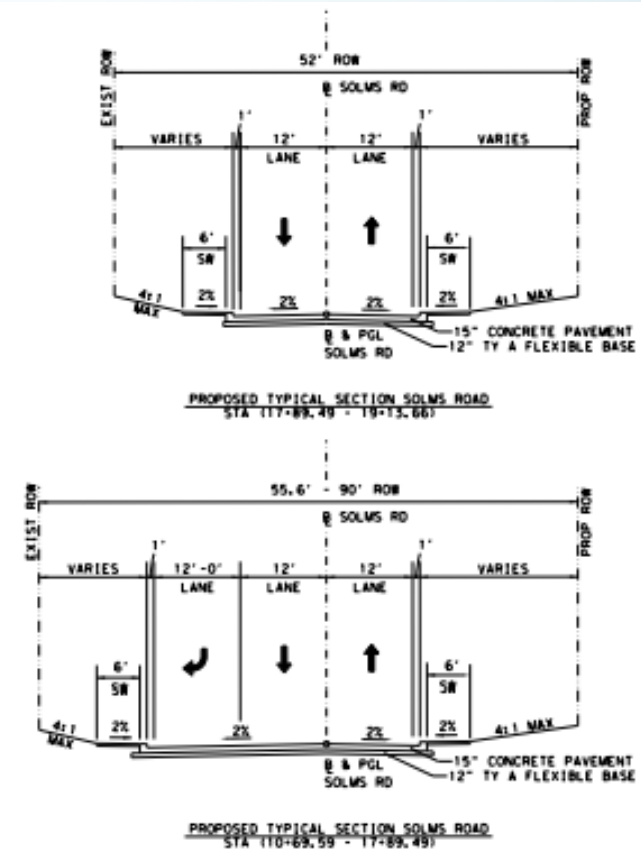
Roadway improvements
Intersection improvements
Traffic signal @ FM 482
Sidewalks
Driveway approaches
Drainage

18. SOLMS RD (IH 35 – FM 482)

Existing Typical Section



Proposed Typical Section



18. SOLMS RD

(IH 35 – FM 482)

Risks/Constraints

Utilities

Limited right-of-way

TxDOT Coordination

Next Steps

Final Design

Est. Construction – 2026

Cost Estimate

\$4,839,000

Leveraged Funding

Possible:

RIF #4

Funding Need

\$4,839,000

19. LANDA PARK CIRCULATION IMPROVEMENTS

PHASE 1: LANDA PARK DRIVE

Project Location Map



Project Scope

Enhanced roadways to improve pedestrian safety and mobility

Roadway realignment

Pedestrian pathways

Improved intersection and crossings

19. LANDA PARK CIRCULATION IMPROVEMENTS

PHASE 1: LANDA PARK DRIVE



19. LANDA PARK CIRCULATION IMPROVEMENTS - PHASING

Cost Estimate

\$10,035,000

Phase 1 – Landa Park Drive

\$2,790,000

Phase 2 – Monument/Nowotny/Fredericksburg

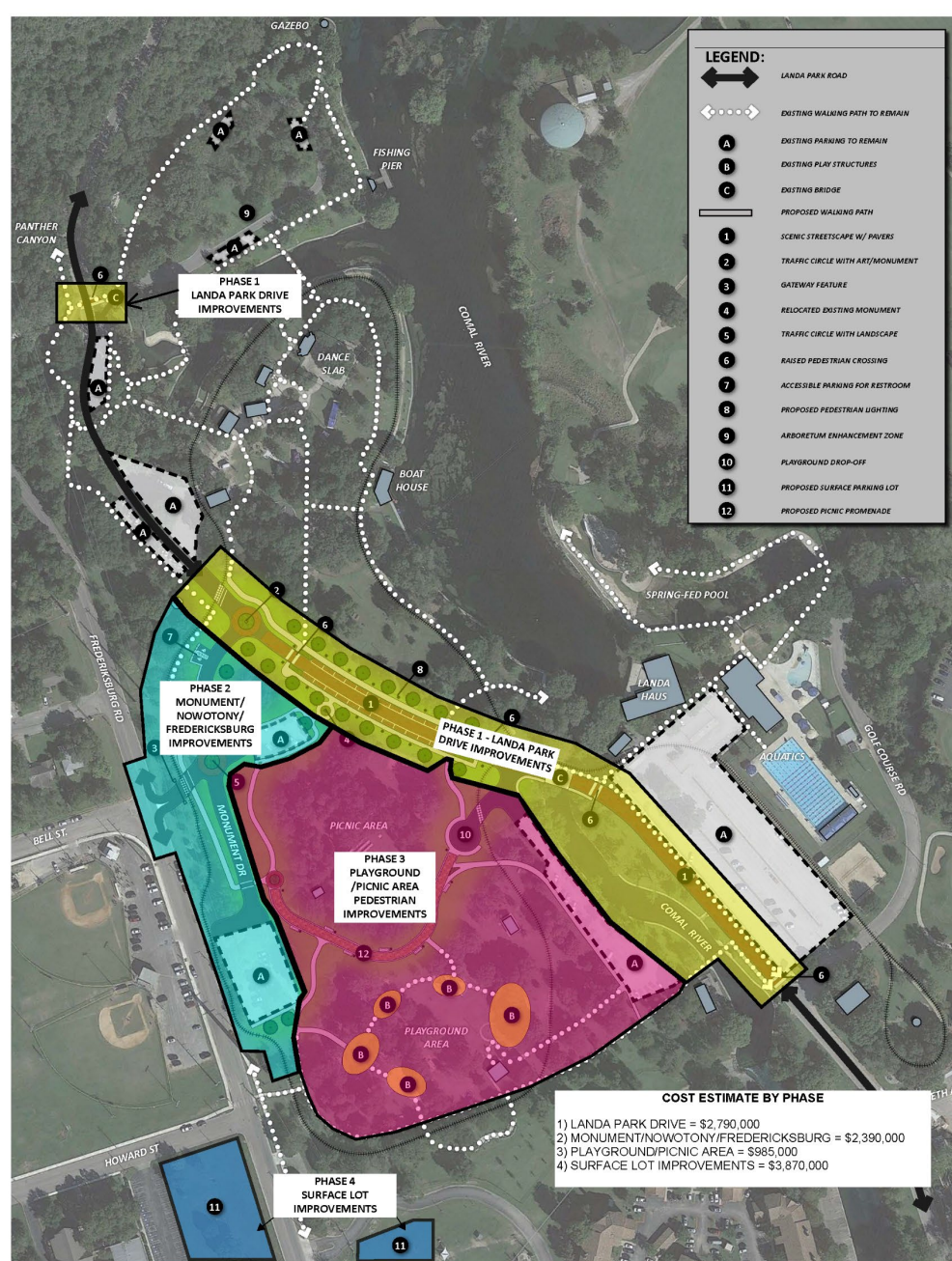
\$2,390,000

Phase 3 – Playground Area

\$985,000

Phase 4 – Surface Parking Lot Improvements

\$3,870,000



LANDA PARK - CIRCULATION IMPROVMENTS PHASING PLAN

SEPTEMBER, 2022

19. LANDA PARK CIRCULATION IMPROVEMENTS

PHASE 1: LANDA PARK DRIVE

Risks/Constraints

Environmental
Floodplain
Regulatory permitting
Seasonal/event coordination

Next Steps

Final Design
Est. Construction – 2025

Cost Estimate

\$10,035,000
Phase 1- \$2,790,000
Phase 2,3,4- \$7,245,000

Leveraged Funding

Possible:
Park Development Fee

Funding Need

\$2,790,000

20. FAUST ST/NACOGDOCHES AVE DRAINAGE

NACOGDOCHES AVE AREA

Project Location Map



Project Scope

Improve drainage systems in Faust St and Nacogdoches Ave area

Upsize outfall to the Guadalupe River

Minimize flooding in the Seguin Ave railroad underpass

20. FAUST ST/NACOGDOCHES AVE DRAINAGE

NACOGDOCHES AVE AREA



Cost Estimate

\$15,342,000

\$17,400,208 Updated

Comanche St Area

\$7,671,000

\$6,136,650 Updated

*Handles 1/3 Runoff

*Quicker Delivery

Nacogdoches Ave Area

\$7,671,000

\$11,263,558 Update

*Handles 2/3 Runoff

*Longer Delivery (TxDOT)

20. FAUST ST/NACOGDOCHES AVE DRAINAGE

NACOGDOCHES AVE AREA

Risks/Constraints

Utilities

Environmental and permitting

UPRR and TxDOT right-of-way

Next Steps

Final Design

Agency coordination

Est. Construction - 2026

Phasing

Drainage Areas

Cost Estimate

\$17,400,208

Comanche St Area = \$6,136,650

Nacogdoches Ave Area = \$11,263,558

Leveraged Funding

Possible: TWDB

Funding Need

Nacogdoches Ave Area = \$11,263,558

Additional Projects? Project Questions?

NBEDC WORKSHOP – NOVEMBER 22, 2022

Goals

- Finalize list of proposed 2023 Bond Projects to consider supporting
- Provide recommendation to City Council on method/process for supporting the list of projects understanding the implications to investment capacity if the Crime Control and Prevention District (CCPD) is implemented

Outline

- Review Bond Advisory Committee & NBEDC project rankings
- NBEDC Debt Service Projects through FY 2040
- NBEDC Capacity Analysis – \$35 million investment
- NBEDC Capacity Analysis – Considering potential implementation of CCPD
- Consider adoption of list of projects to be supported that aligns to current and future capacity
- Develop policy direction to communicate to City Council on supporting projects that considers potential implementation of a CCPD

NEXT MEETING

Public Input & Project Scenarios/Propositions

Monday, December 5, 2022, 6:00 PM

City Hall

550 Landa St, New Braunfels, TX 78130

www.newbraunfels.gov/bond



QUESTIONS/COMMENTS?

