

# Transportation & Capital Improvements Department

---

April 2, 2025

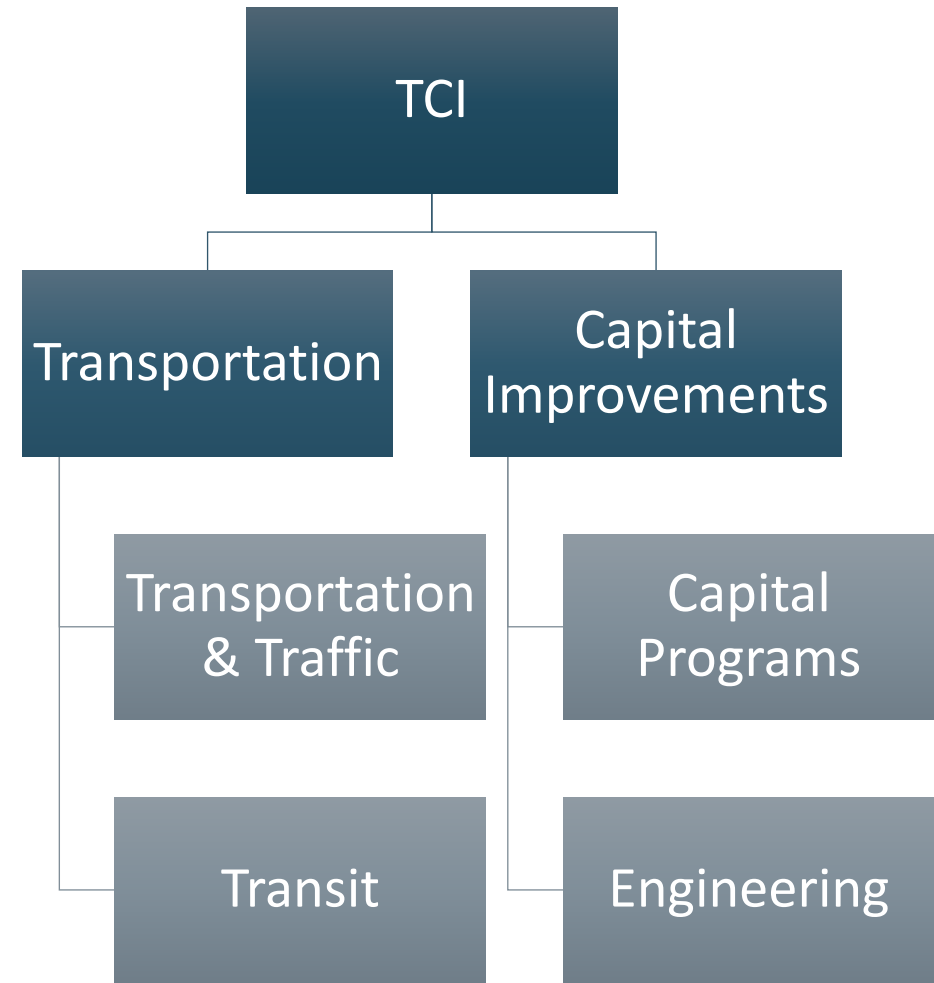


## ▲ **Mission**

Plan and deliver safe and reliable multimodal transportation and capital improvements.

## ▲ **Vision**

Responsive and progressive team dedicated to improve the community's safety, mobility, and quality of life.



## Transportation Planning

Thoroughfare Plan

Pedestrians & Bicycles

Street Safety

Mobility & Connectivity

## Traffic Engineering

Traffic Requests

Traffic Signals

Parking by Permit

Transportation & Traffic  
Advisory Board

## Support & Coordination

City Departments

Alamo Area MPO

TxDOT

Local & Regional Agencies

- ▲ New Braunfels Urban Transit District
- ▲ City receives direct state and federal grant funds for transit operations
- ▲ Plan to implement new “on-demand, microtransit” transit service in 2025
- ▲ Division responsibilities
  - Develops and manages service contracts and reporting
  - State and federal reporting
  - Responds to the community
  - Agency coordination
  - Additional service planning





## Development

Pre-development Meetings

Public Improvements

Traffic & Drainage Review

Roadway Impact Fees

Agreements

## Drainage

Drainage Area Master Plan

Design Criteria

Project Development

Regional Coordination

Drainage Complaints Support

## Floodplain Management

Program Administration

Floodplain Administrator

Development Permits

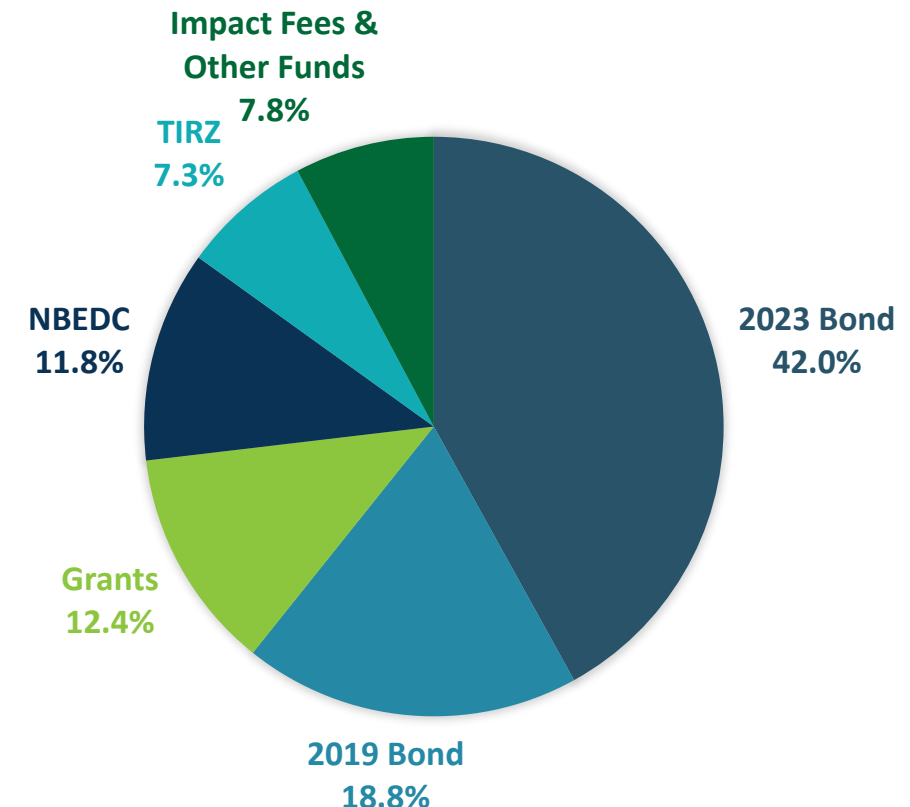
Community Rating System

Flood Studies and Maps

# Capital Programs

|                               |                                  |
|-------------------------------|----------------------------------|
| Capital Improvement Plan      | 2019 Bond \$117M                 |
| 2023 Bond \$140M              | Economic Development Corporation |
| AAMPO & TxDOT                 | Tax Increment Reinvestment Zones |
| New Braunfels Utilities (NBU) | Other Funding Programs/ Partners |

***Projected Capital Investment  
FY 2024 – 2031  
Total  
\$331 Million  
Transportation  
~\$200 Million***



# Capital Project Lifecycle

