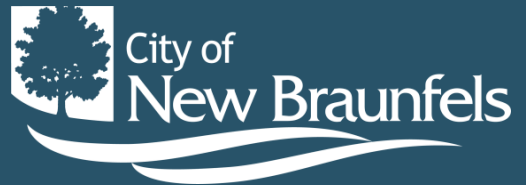


Information Technology

Tony Gonzalez
Director



Organizational Structure

Director of Information Technology

GIS Manager

GIS Technicians

GIS Analysts

Business Systems
Manager

Business Analysts

Network Manager

Network Administrators

Assistant Director

Service Desk Technicians

Systems Administrators

IT is an Always Changing Service

▲ What we used to do:

- Break/Fix
- Network Services
- Computer replacements
- Communication Services
- Disaster Recovery

▲ Plus, what we also do today:

- Location Intelligence/GIS Services
- Security Services
- Data Management
- Project Management
- Consulting Services
- Mobility Services
- Disaster Recovery/Business Continuity
- Artificial Intelligence

IT By The Numbers

1,400+

Enterprise Directory
Service Accounts

250+

Databases

4+ TB

Database Storage

190

Wireless Access Points

5,517

Network Connections

600+

Desktops/Laptops

220+

Mobile Computers

850+

Cellular Lines of Service
(iPads, Phones, Laptops,
MDTs)

350+

Peripherals (Printers,
Plotters, Scanners)

What's Your Best Guess?

Email Systems – How many emails do we have archived?

28.5 Million

How many applications do we support?

150+*

How many intrusion attempts do we have per month?

60,000 and growing

Miles of fiber-optic cable we have installed?

107 miles



- ▲ HB 3834 – State Law now requires Cyber Security Training
 - Went into effect in 2019
 - Monthly Phishing Tests via e-mail
 - Additional training for “clickers”

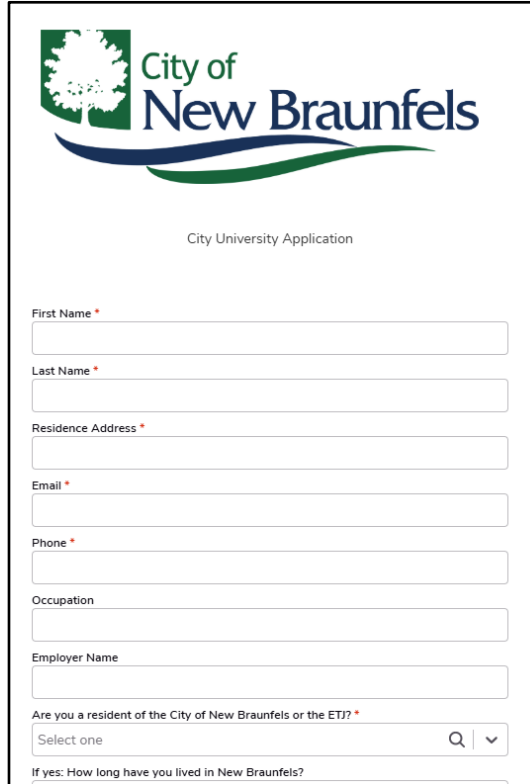
Let's Talk About those Layers...

- ▲ Immutable Backups
- ▲ Air-gapped “Connection”
- ▲ Third-party Security Assessment
 - UT partnership
 - Penetration Testing
- ▲ MFA
- ▲ Passwords – Big change in the last year

Number of Characters	Numbers Only	Lowercase Letters	Upper and Lowercase Letters	Numbers, Upper and Lowercase Letters	Numbers, Upper and Lowercase Letters, Symbols
4	Instantly	Instantly	Instantly	Instantly	Instantly
5	Instantly	Instantly	Instantly	Instantly	Instantly
6	Instantly	Instantly	Instantly	Instantly	Instantly
7	Instantly	Instantly	2 secs	7 secs	31 secs
8	Instantly	Instantly	2 mins	7 mins	39 mins
9	Instantly	10 secs	1 hour	7 hours	2 days
10	Instantly	4 mins	3 days	3 weeks	5 months
11	Instantly	2 hours	5 months	3 years	34 years
12	2 secs	2 days	24 years	200 years	3k years
13	19 secs	2 months	1k years	12k years	202k years
14	3 mins	4 years	64k years	750k years	16m years
15	32 mins	100 years	3m years	46m years	1bn years
16	5 hours	3k years	173m years	3bn years	92bn years
17	2 days	69k years	9bn years	179bn years	7tn years
18	3 weeks	2m years	467bn years	11tn years	438tn years

Application Development – What a Journey

- From Smartsheet to Quickbase
 - How many Smartsheets would you guess we had when we started?
 - We have “outgrown” Smartsheet
- NB Stat



City of New Braunfels

City University Application

First Name *

Last Name *

Residence Address *

Email *

Phone *

Occupation

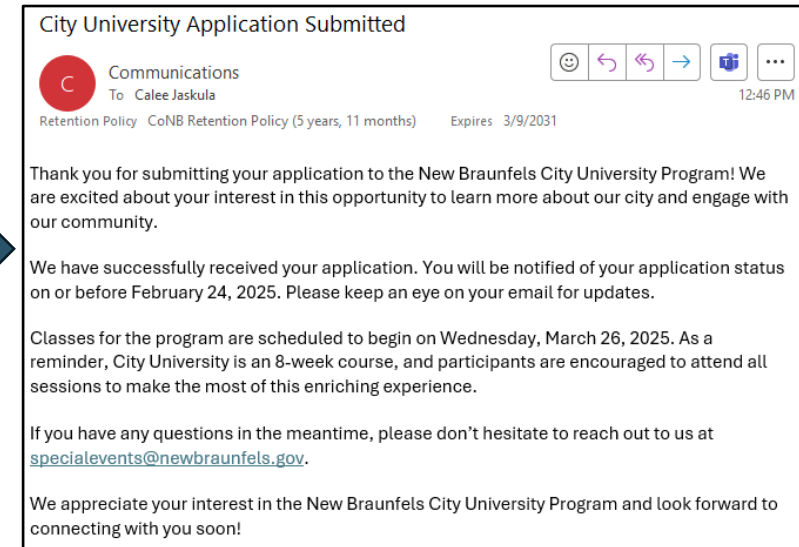
Employer Name

Are you a resident of the City of New Braunfels or the ETJ? *

Select one

If yes: How long have you lived in New Braunfels?

Database



City University Application Submitted

Communications
To: Calee Jaskula
Retention Policy: CoNB Retention Policy (5 years, 11 months) Expires: 3/9/2031

12:46 PM

Thank you for submitting your application to the New Braunfels City University Program! We are excited about your interest in this opportunity to learn more about our city and engage with our community.

We have successfully received your application. You will be notified of your application status on or before February 24, 2025. Please keep an eye on your email for updates.

Classes for the program are scheduled to begin on Wednesday, March 26, 2025. As a reminder, City University is an 8-week course, and participants are encouraged to attend all sessions to make the most of this enriching experience.

If you have any questions in the meantime, please don't hesitate to reach out to us at speialevents@newbraunfels.gov.

We appreciate your interest in the New Braunfels City University Program and look forward to connecting with you soon!

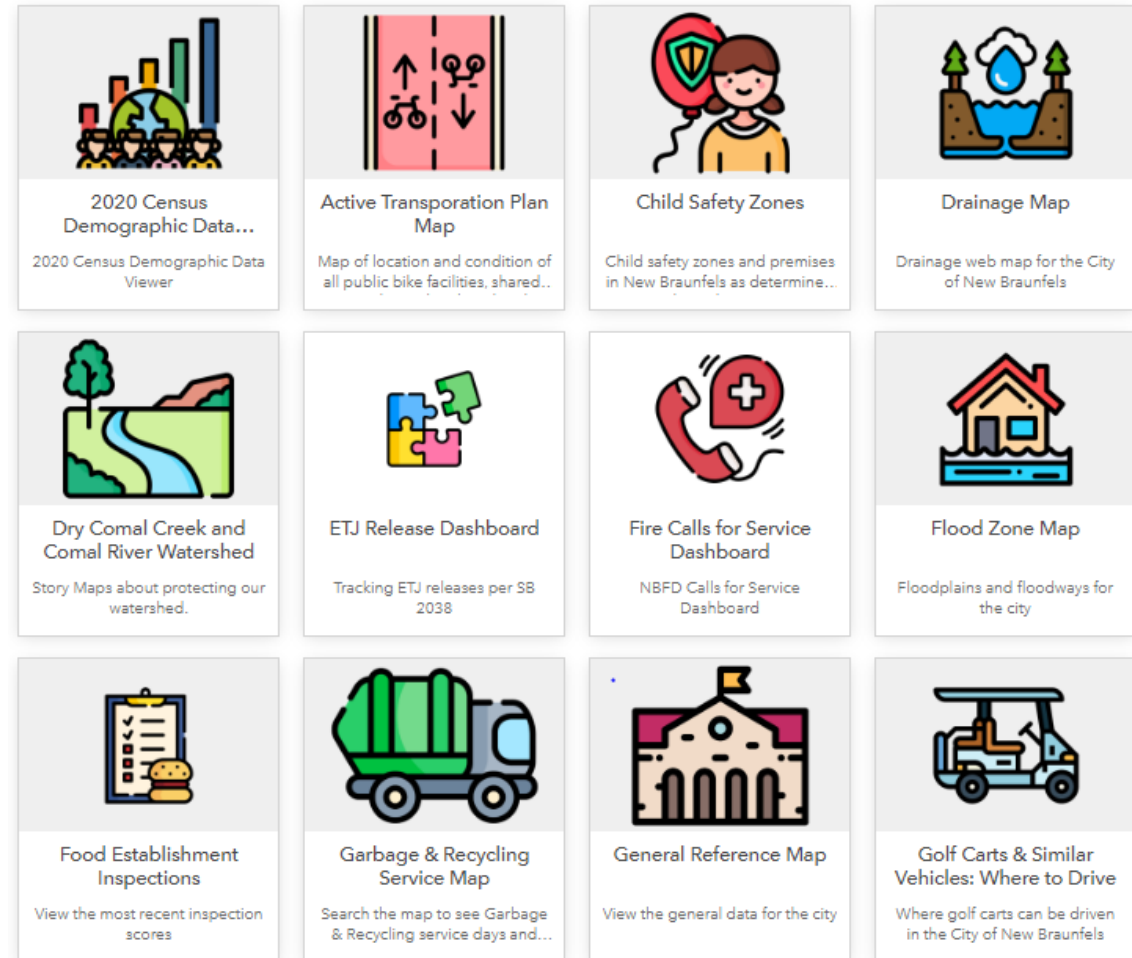
What is GIS?

How does the city use it?



Maps, Maps, Maps!!!!

- ▲ Council Districts
- ▲ Parks and Rec Map
- ▲ Food Establishments
- ▲ General Reference
- ▲ Road Closures
- ▲ Short Term Rentals
- ▲ NB at Work Dashboard
 - NB at Work



Questions?

